

Science Building Phase 1

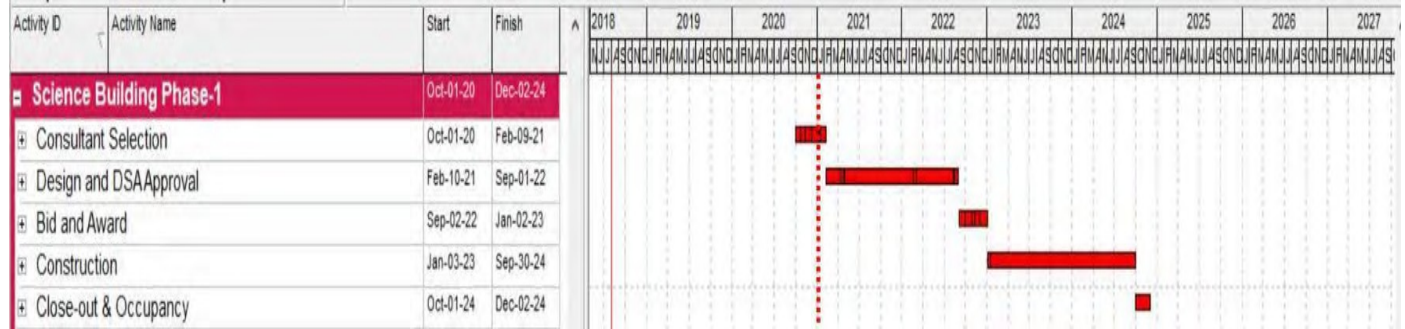
Project Summary

Project Scope: This project will replace the existing Science Building, Sewell Hall, which was built in 1961. The new 54,553 GSF Science Building will contain a total of 38,001 assignable square feet comprised of 936 assignable square feet of lecture space, 27,696 assignable square feet of laboratory space, 3,352 assignable square feet of office space, 1,497 assignable square feet of library space and 4,520 square feet of instructional support space. In addition, the project will also remove several temporary buildings that have been added over time to help increase teaching laboratory space.

Project Budget:
Funding:
Delivery Method:
Project Phase:
Construction Start:
Construction End:

\$61.6M
 State and Measure E
 Design Bid Build
 Pre-Design
 January 2023
 December 2024

Project Schedule



Project Status

- A Request for Proposals for architectural services for the new Science Building Phase 1 was released on November 6, 2020.
- 18 proposals were received in December; a selection committee reviewed all qualified proposals.
- Top proposal selected.

Next 90 Days

- Board approval of the architectural services contract in February 2021; programming efforts to immediately follow.

Project Rendering



Project Financial Report – Science Building Phase 1
As of December 31, 2020

Budget in Development.
No expenses to date.