



# Sierra Joint Community College District Final Draft Map Presentation

February 8, 2022

# Schedule

---

Step	Description
<b>Census Data Release</b> August 12	Census Bureau releases official 2020 Census population data.
<b>Two Initial Hearings</b> Sept. 14 & Oct. 12	Held prior to release of draft maps. Education and to solicit input on the communities in the Districts.
<b>California Data Release</b> September 27	California Statewide Database releases California's official 'prisoner-adjusted' 2020 redistricting data.
<b>Map Hearing #1</b> Jan. 11, 2022	First of Two Public Hearings to discuss and revise the draft maps and to discuss the election sequence.
<b>Map Hearing #2; Possible Map Adoption</b> Feb. 8, 2022	Second of Two Public Hearings to discuss and revise the draft maps and to discuss the election sequence; possible map adoption.
<b>(Optional) Map Adoption</b> Feb. 22, 2022	Additional hearing date for map adoption, if needed.

# Redistricting Laws & Principles

---

## Federal Laws

Equal Population  
Federal Voting Rights Act  
No Racial Gerrymandering



## Traditional Redistricting Principles

Communities of interest  
Compact  
Contiguous  
Visible (Natural & man-made) boundaries  
Respect voters' choices / continuity in office  
Planned future growth  
Use Current districts as basis

# “Communities of Interest”

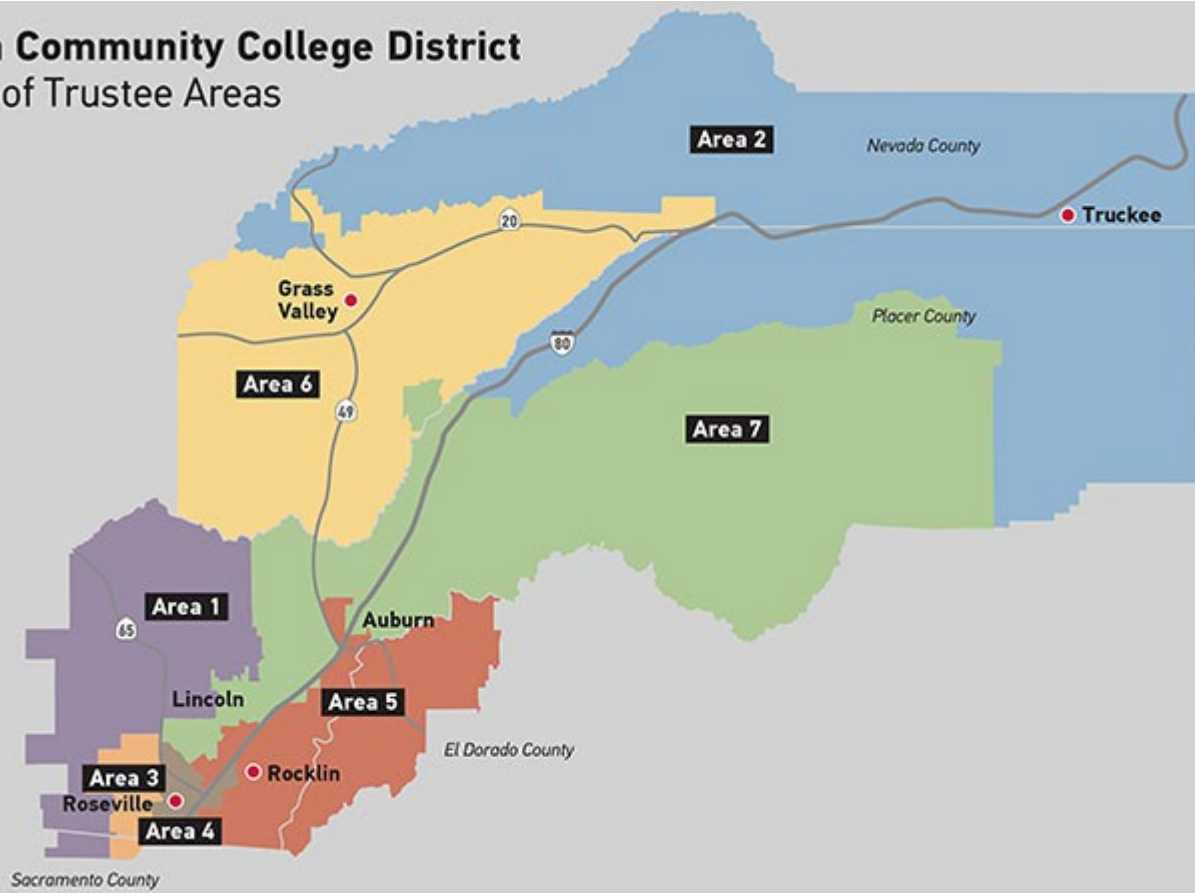
---

Under the California Elections Code, “community of interest” has a very specific definition in the context of districting and redistricting cities and counties:

A “community of interest” is a population that shares common social or economic interests that should be included within a single district for purposes of its effective and fair representation.

Communities of interest do not include relationships with political parties, incumbents, or political candidates.

# Sierra Community College District Board of Trustee Areas



# Proposal 1

Sequence:

1 -2022

2 -2022

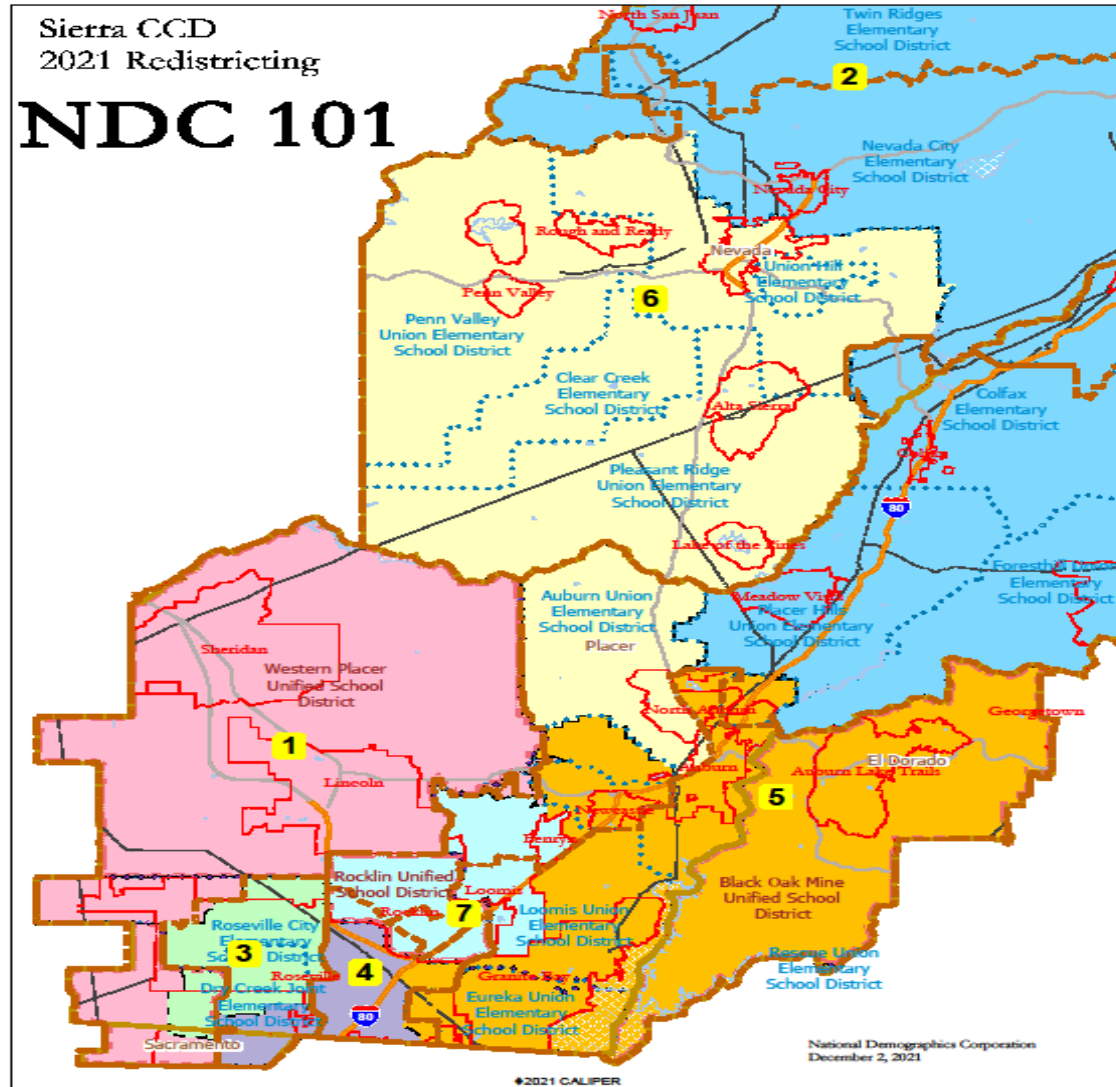
3 -2024

4 -2024

5 -2022

6 -2022

7 -2024



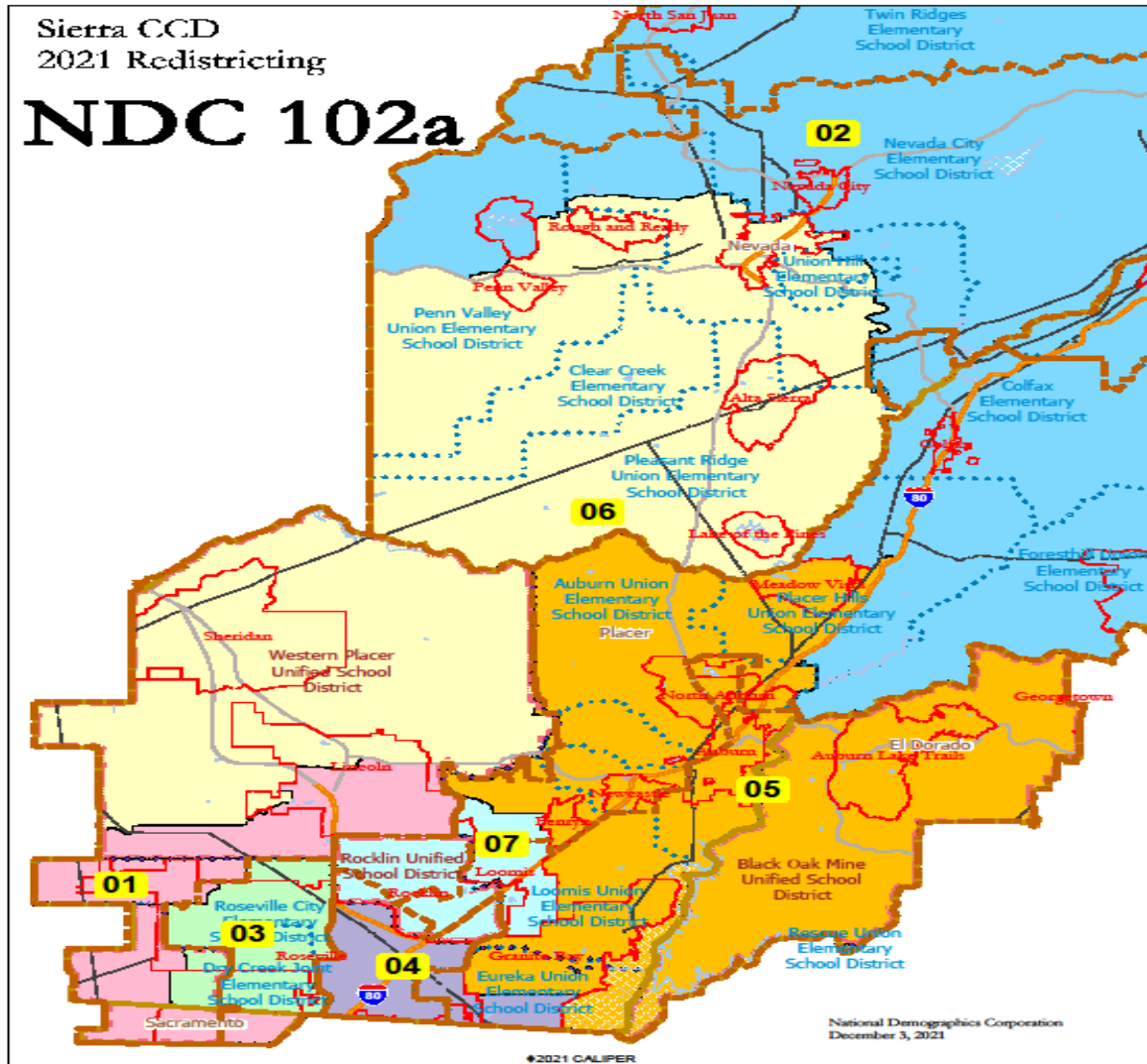
# Proposal 1 Statistics

NDC 101											
District				1	2	3	4	5	6	7	Total
					78,593	81,673	80,671	80,567	81,138	81,455	
		Deviation from ideal			-2,013	1,067	65	-39	532	849	
		% Deviation			-2.50%	1.32%	0.08%	-0.05%	0.66%	1.05%	
Total Pop		% Hisp			12%	14%	19%	10%	11%	14%	
		% NH White			79%	59%	59%	75%	80%	66%	
		% NH Black			1%	4%	4%	1%	1%	2%	
		% Asian-American			2%	18%	12%	9%	3%	13%	
Citizen Voting Age Pop		Total			61,012	51,944	54,544	62,690	63,662	52,921	
		% Hisp			7%	13%	13%	7%	7%	11%	
		% NH White			88%	69%	71%	83%	89%	78%	
		% NH Black			1%	3%	5%	2%	1%	2%	2%
		% Asian/Pac.Isl.									

# Proposal 2

Sequence:

- 1 -2022
- 2 -2022
- 3 -2024
- 4 -2024
- 5 -2022
- 6 -2022
- 7 -2024





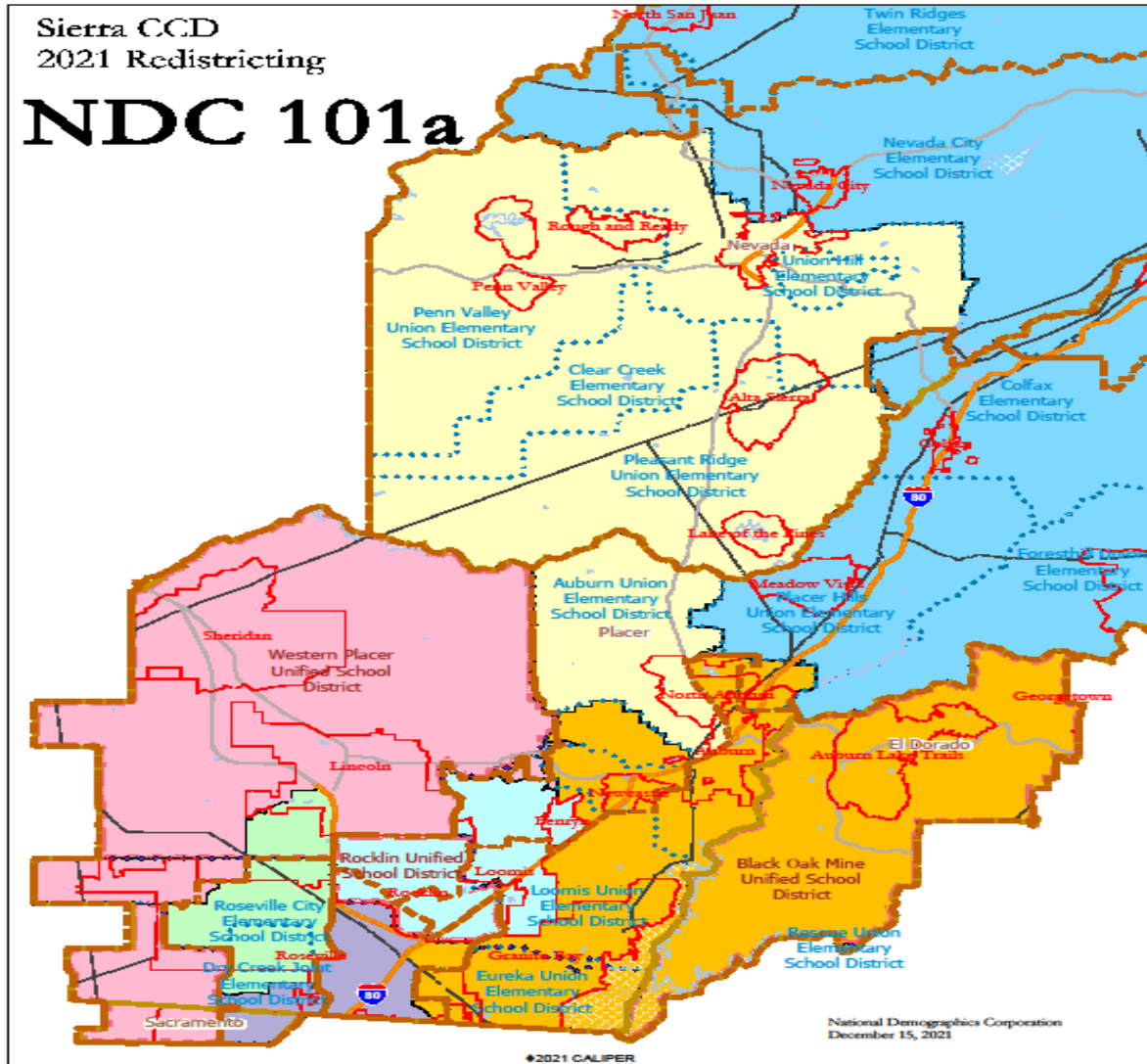
# Proposal 2 Statistics

NDC 102A											
District				1	2	3	4	5	6	7	Total
					82,223	79,978	81,513	78,880	80,827	79,545	
		Deviation from ideal			1,617	-628	907	-1,726	221	-1,061	
		% Deviation			2.01%	-0.78%	1.13%	-2.14%	0.27%	-1.32%	
Total Pop		% Hisp			12%	14%	17%	12%	15%	14%	
		% NH White			80%	60%	63%	78%	75%	66%	
		% NH Black			1%	4%	3%	1%	1%	2%	
		% Asian-American			2%	18%	12%	4%	3%	13%	
Citizen Voting Age Pop		Total			63,470	50,502	57,495	63,638	60,289	51,476	
		% Hisp			7%	12%	13%	7%	10%	10%	
		% NH White			89%	70%	74%	86%	84%	78%	
		% NH Black			1%	2%	3%	1%	1%	2%	2%
		% Asian/Pac.Isl.									

# Proposal 3

Sequence:

- 1 -2022
- 2 -2022
- 3 -2024
- 4 -2024
- 5 -2022
- 6 -2022
- 7 -2024



# Proposal 3 Statistics

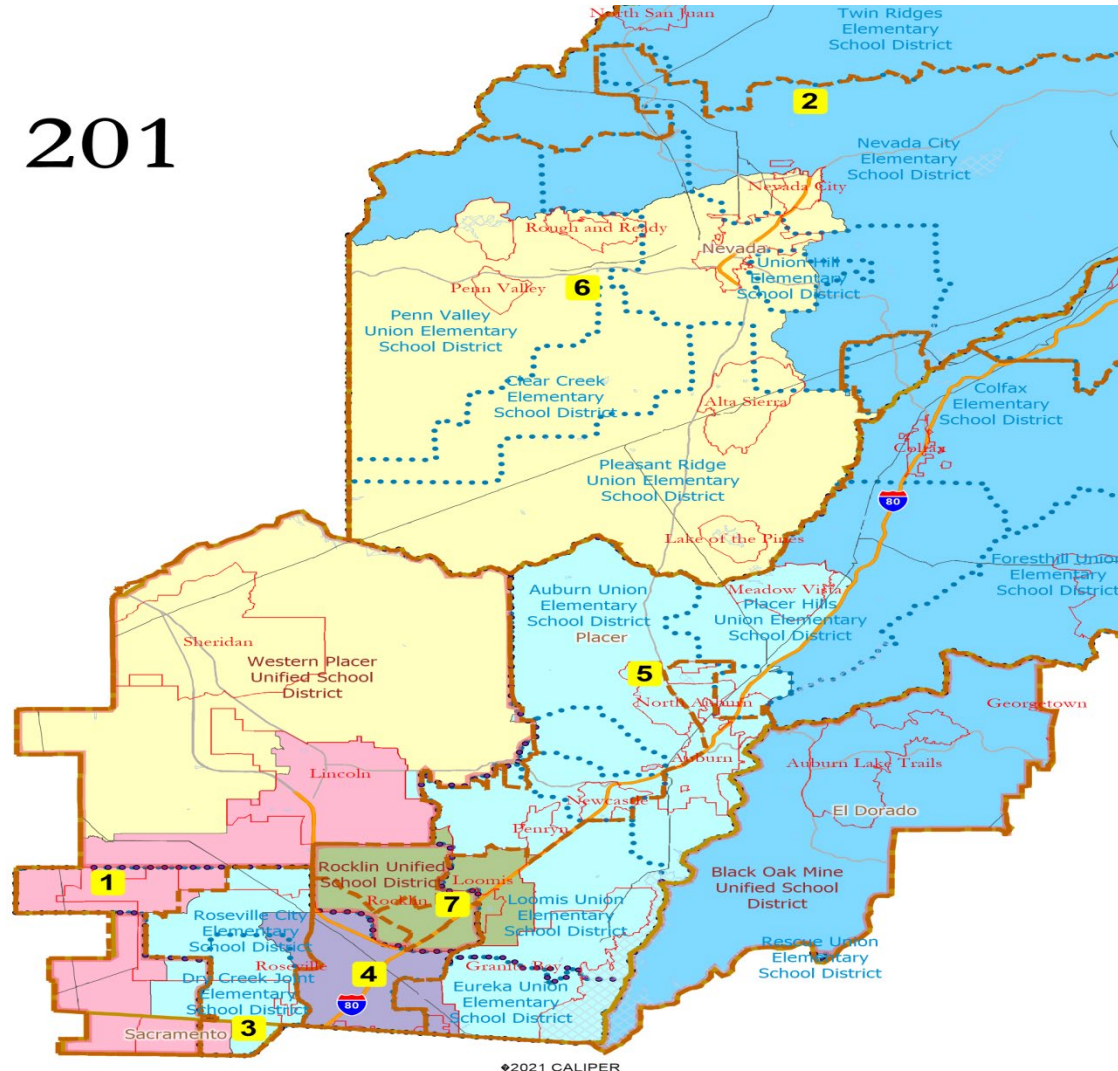
NDC 101A										
District			1	2	3	4	5	6	7	Total
				78,593	80,728	80,671	80,567	81,138	81,455	
		Deviation from ideal		-2,013	122	65	-39	532	849	
		% Deviation		-2.50%	0.15%	0.08%	-0.05%	0.66%	1.05%	
Total Pop		% Hisp		12%	14%	19%	10%	11%	14%	
		% NH White		79%	60%	59%	75%	80%	66%	
		% NH Black		1%	4%	4%	1%	1%	2%	
		% Asian-American		2%	18%	12%	9%	3%	13%	
Citizen Voting Age Pop		Total		61,012	50,853	54,544	62,690	63,662	52,921	
		% Hisp		7%	12%	13%	7%	7%	11%	
		% NH White		88%	70%	71%	83%	89%	78%	
		% NH Black		1%	2%	5%	2%	1%	2%	2%
		% Asian/Pac.Isl.								

# Proposal 4

## 201

Sequence:

- 1 -2022
- 2 -2022
- 3 -2024
- 4 -2024
- 5 -2022
- 6 -2022
- 7 -2024



# Proposal 4 Statistics

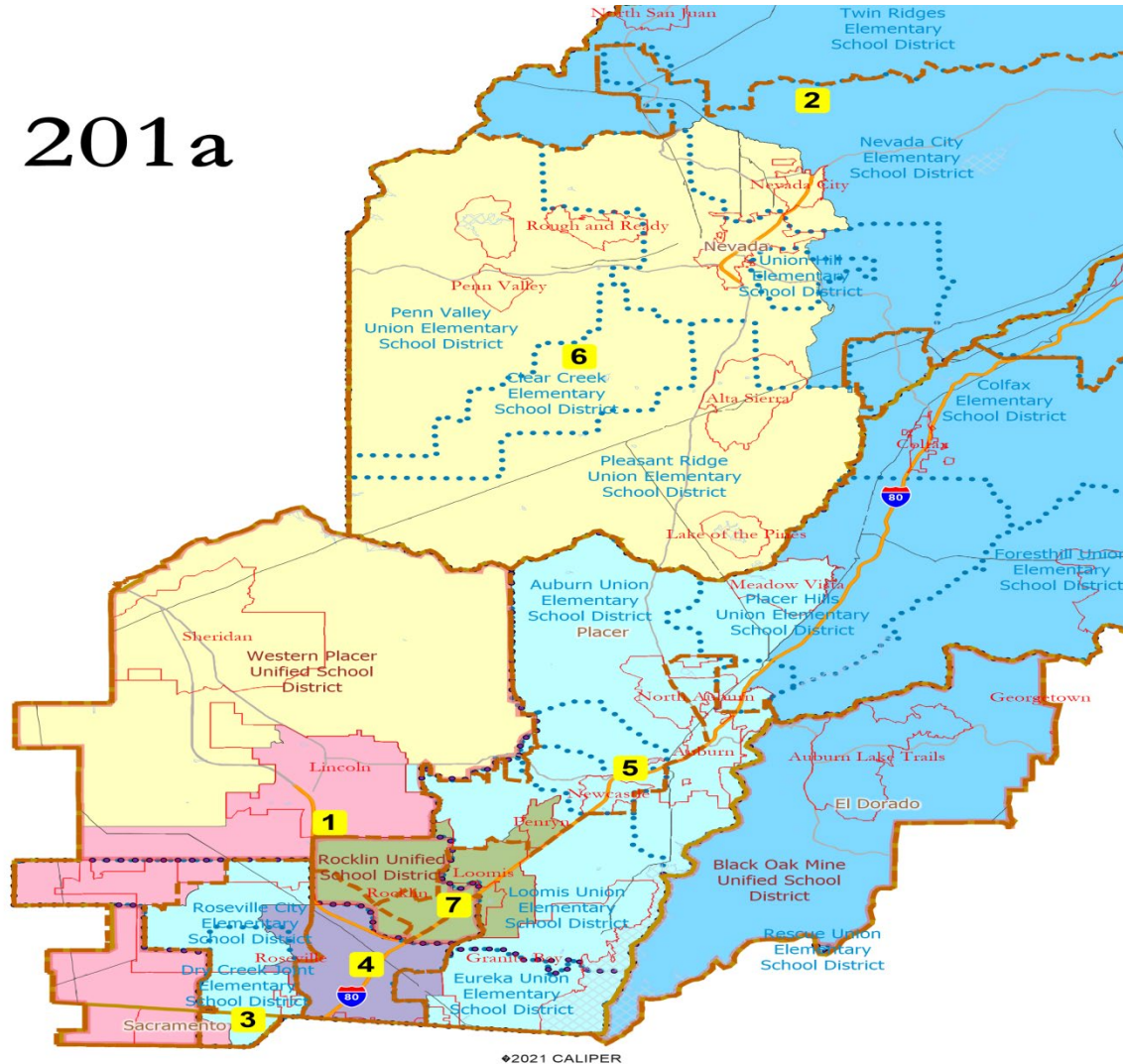
NDC 201		1	2	3	4	5	6	7	Total
2020 Census	Total Population	84,975	78,304	82,333	82,305	79,773	77,947	78,605	564,242
	Population Deviation	4,369	-2,302	1,727	1,699	-833	-2,659	-2,001	7,028
	Pct. Deviation	5.42%	-2.86%	2.14%	2.11%	-1.03%	-3.30%	-2.48%	8.72%
Total Pop.	Hispanic/Latino	19%	12%	14%	18%	11%	10%	14%	14%
	NH White	59%	79%	59%	63%	77%	80%	66%	69%
	NH Black	6%	1%	4%	3%	1%	1%	2%	3%
	NH Asian/Pac.Isl.	12%	4%	20%	13%	7%	5%	15%	11%
	NH Native Amer.	2%	3%	1%	2%	3%	3%	2%	2%
Citizen Voting Age Pop	Total	56,900	60,108	51,787	57,395	63,798	61,608	50,783	402,379
	Hisp	15%	7%	11%	14%	7%	8%	11%	10%
	NH White	68%	89%	70%	74%	85%	87%	77%	79%
	NH Black	6%	1%	2%	3%	1%	1%	2%	2%
	Asian/Pac.Isl.	11%	3%	16%	8%	6%	4%	9%	8%
	Native Amer.	1%	2%	1%	1%	2%	2%	1%	1%

# Proposal 5

201a

Sequence:

- 1 -2022
- 2 -2022
- 3 -2024
- 4 -2024
- 5 -2022
- 6 -2022
- 7 -2024



# Proposal 5 Statistics

NDC 201a	Field	1	2	3	4	5	6	7	Total
2020 Census	Total Population	82,726	75,219	82,247	82,686	81,491	80,046	79,827	564,242
	Population Deviation	2,120	-5,387	1,641	2,080	885	-560	-779	7,507
	Pct. Deviation	2.63%	-6.68%	2.04%	2.58%	1.10%	-0.69%	-0.97%	9.31%
Total Pop.	Hispanic/Latino	19%	13%	14%	19%	11%	10%	14%	14%
	NH White	60%	79%	58%	62%	76%	81%	66%	69%
	NH Black	6%	1%	4%	3%	1%	1%	2%	3%
	NH Asian/Pac.Isl.	12%	4%	20%	13%	8%	5%	15%	11%
	NH Native Amer.	2%	3%	1%	2%	3%	3%	2%	2%
Citizen Voting Age Pop	Total	55,829	57,729	50,977	57,944	64,826	63,342	51,731	402,379
	Hisp	15%	7%	10%	15%	7%	7%	11%	10%
	NH White	68%	89%	69%	74%	84%	88%	78%	79%
	NH Black	6%	1%	3%	3%	1%	1%	2%	2%
	Asian/Pac.Isl.	11%	3%	17%	8%	7%	4%	9%	8%
	Native Amer.	1%	2%	1%	1%	2%	2%	1%	1%

# Redistricting Website

<https://www.sierracollege.edu/districting>