



Sierra Joint Community College District Districting Update

October 12, 2021

Sierra CCD Election System

1. “At Large”
2. “From District”
3. Converting to “By District”

**The California Voting Rights Act
was written to specifically
encourage by-district elections.**

Schedule

Step	Description
Census Data Release August 12	Census Bureau releases official 2020 Census population data.
Two Initial Hearings Sept. 14 & Oct. 12	Held prior to release of draft maps. Education and to solicit input on the communities in the Districts.
California Data Release September 27	California Statewide Database releases California's official 'prisoner-adjusted' 2020 redistricting data.
Two Draft Map Hearings Jan. 8 & Feb. 11, 2022	Two Public Hearings to discuss and revise the draft maps and to discuss the election sequence.
Map Adoption Feb. 22, 2022	Final map must be posted at least 7 days prior to adoption. Map adopted via ordinance.

Redistricting Laws & Principles

Federal Laws

Equal Population
Federal Voting Rights Act
No Racial Gerrymandering



Traditional Redistricting Principles

Communities of interest
Compact
Contiguous
Visible (Natural & man-made) boundaries
Respect voters' choices / continuity in office
Planned future growth
Use Current districts as basis

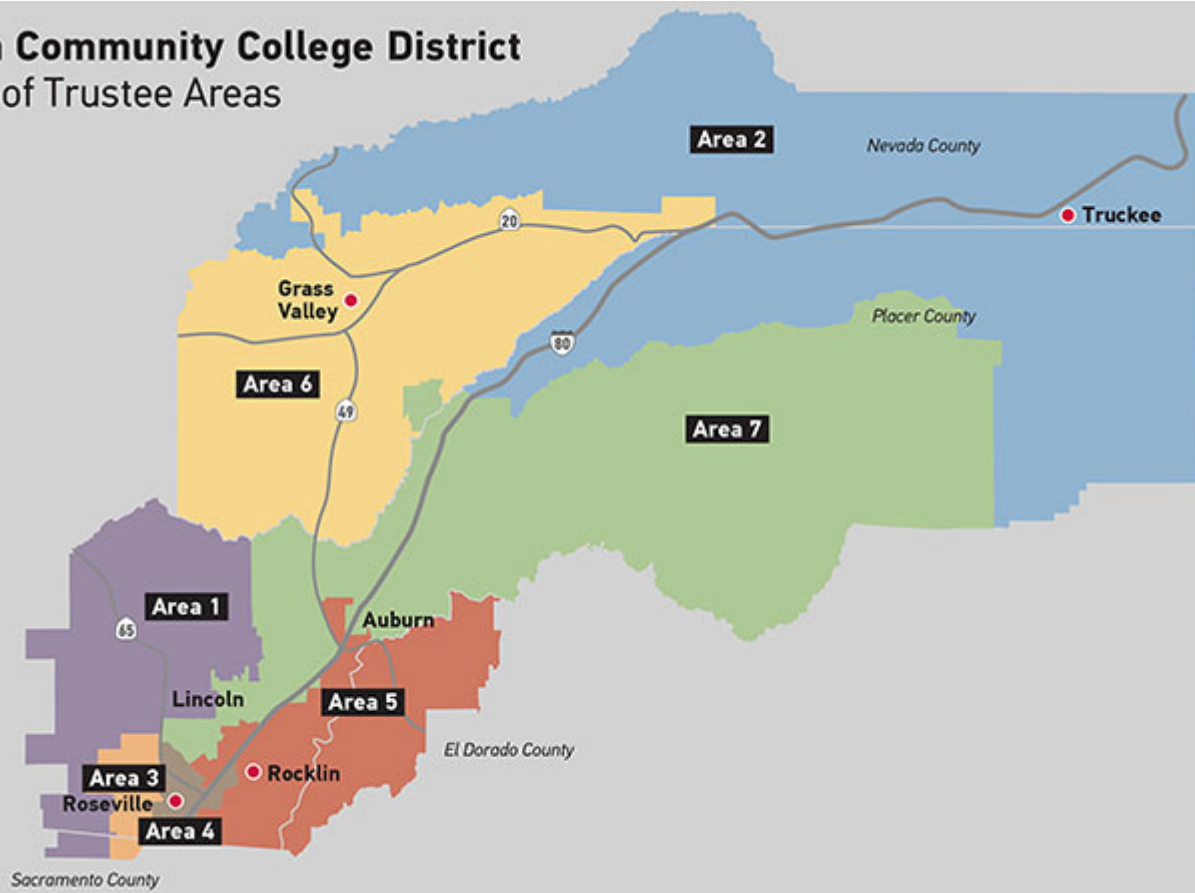
“Communities of Interest”

Under the California Elections Code, “community of interest” has a very specific definition in the context of districting and redistricting cities and counties:

A “community of interest” is a population that shares common social or economic interests that should be included within a single district for purposes of its effective and fair representation.

Communities of interest do not include relationships with political parties, incumbents, or political candidates.

Sierra Community College District Board of Trustee Areas



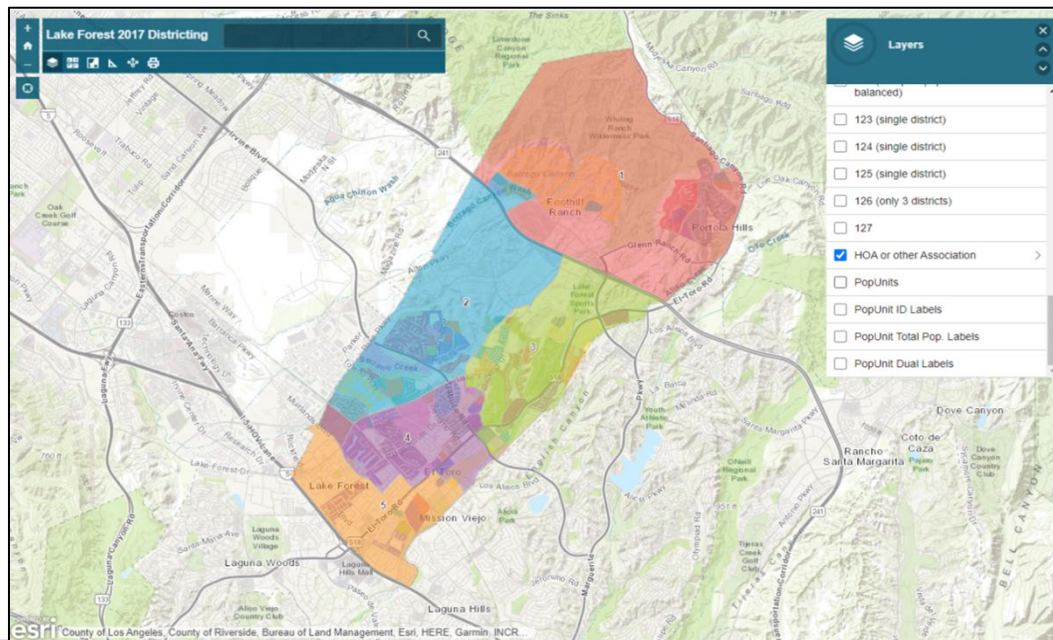
Districting Website

<http://www.sierracollege.edu/districting>

Simple Map Review Tool

Online Interactive Review Map

- ESRI's “ArcGIS Online” – similar to Google Maps in ease of use
- Used to review, analyze and compare maps, not to create them
- Includes overlays of “community of interest” and other data



Simple Map Drawing Tool

Paper “Public Participation Kit”

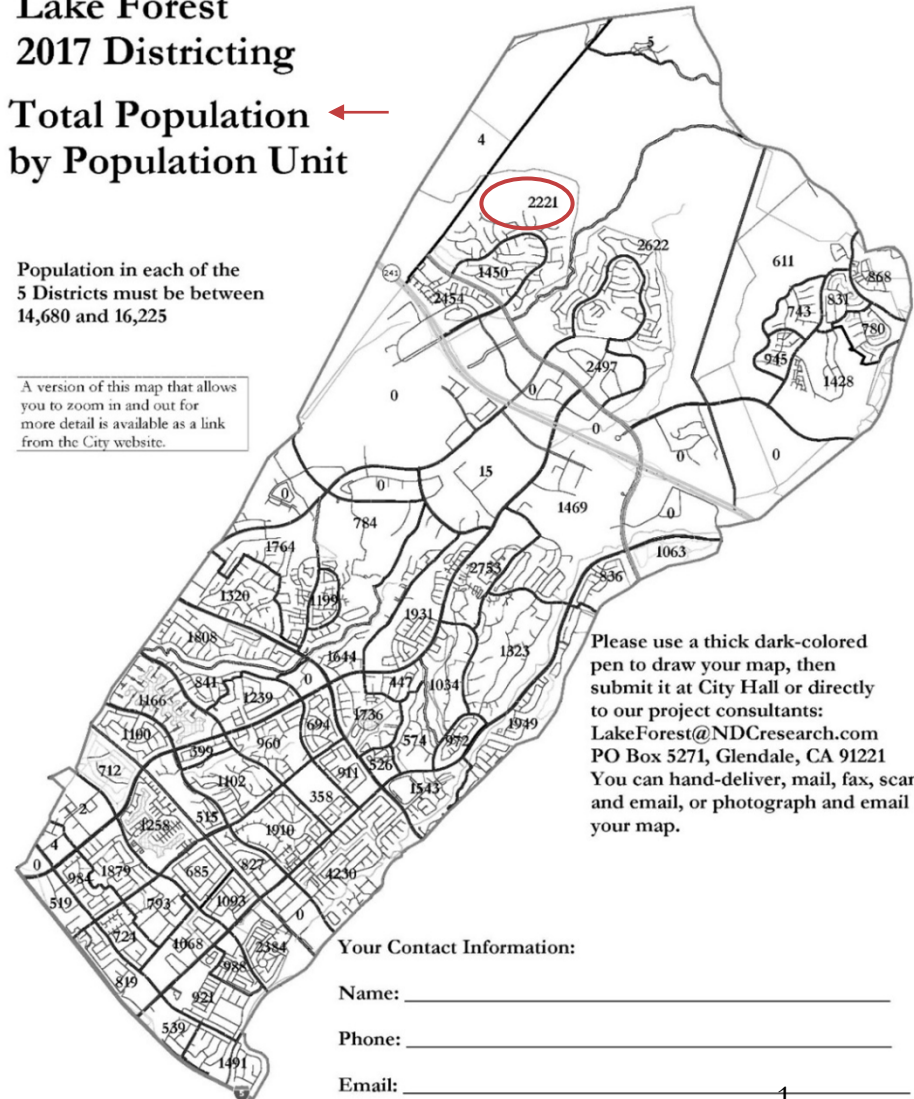
- For those without internet access or who prefer paper
- Total Population Counts only – no demographic numbers

Lake Forest 2017 Districting

Total Population by Population Unit

Population in each of the 5 Districts must be between 14,680 and 16,225

A version of this map that allows you to zoom in and out for more detail is available as a link from the City website.



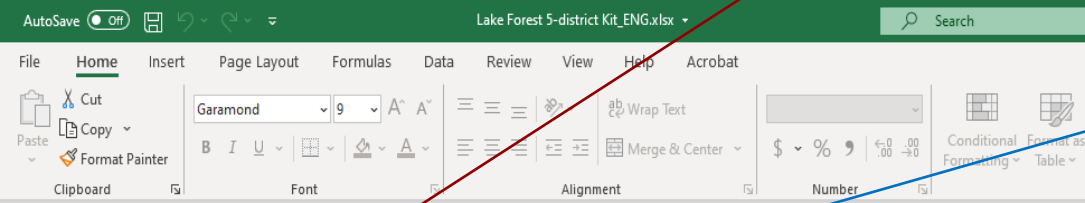
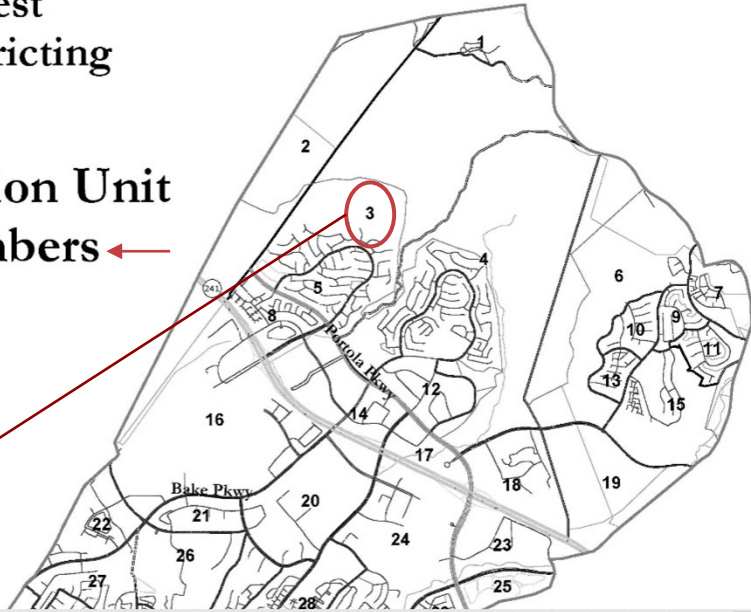
Simple Map Drawing Tool + Excel Supplement

“Public Participation Kit”

- For those who know Excel and do not wish to use online tools
- Adds CVAP data
- Excel does the math

Lake Forest
2017 Districting

Population Unit
ID Numbers



		Counts							Percentages											
Group	Category	1	2	3	4	5	6	7	Unassigned	Total	1	2	3	4	5	6	7	Unassigned	Total	
Tot. Pop.		0	0	0	0	0	0	0	107,197	107,197	0	-100%	-100%	-100%	-100%	-100%	-100%	-100%	0	0.00%
Total Population		Hisp	0	0	0	0	0	0	34,182	34,182	#DIV/0!	#DIV/0!	#DIV/0!	#DIV/0!	#DIV/0!	#DIV/0!	#DIV/0!	#DIV/0!	32%	32%
		NH Wht	0	0	0	0	0	0	64,294	64,294	#DIV/0!	#DIV/0!	#DIV/0!	#DIV/0!	#DIV/0!	#DIV/0!	#DIV/0!	#DIV/0!	60%	60%
		NH Blk	0	0	0	0	0	0	1,919	1,919	#DIV/0!	#DIV/0!	#DIV/0!	#DIV/0!	#DIV/0!	#DIV/0!	#DIV/0!	#DIV/0!	2%	2%
		NH Asn	0	0	0	0	0	0	4,530	4,530	#DIV/0!	#DIV/0!	#DIV/0!	#DIV/0!	#DIV/0!	#DIV/0!	#DIV/0!	#DIV/0!	4%	4%
Total CVAP		0	0	0	0	0	0	0	83,090	83,090	#DIV/0!	#DIV/0!	#DIV/0!	#DIV/0!	#DIV/0!	#DIV/0!	#DIV/0!	#DIV/0!	77%	77%
Voting Age Population		Hisp	0	0	0	0	0	0	22,928	22,928	#DIV/0!	#DIV/0!	#DIV/0!	#DIV/0!	#DIV/0!	#DIV/0!	#DIV/0!	#DIV/0!	21%	28%
		NH Wht	0	0	0	0	0	0	53,857	53,857	#DIV/0!	#DIV/0!	#DIV/0!	#DIV/0!	#DIV/0!	#DIV/0!	#DIV/0!	#DIV/0!	59%	65%
		NH Blk	0	0	0	0	0	0	1,401	1,401	#DIV/0!	#DIV/0!	#DIV/0!	#DIV/0!	#DIV/0!	#DIV/0!	#DIV/0!	#DIV/0!	2%	4%
		NH Asn	0	0	0	0	0	0	7,763	7,763	#DIV/0!	#DIV/0!	#DIV/0!	#DIV/0!	#DIV/0!	#DIV/0!	#DIV/0!	#DIV/0!	7%	9%
Total CVAP		0	0	0	0	0	0	0	18,936	18,936	#DIV/0!	#DIV/0!	#DIV/0!	#DIV/0!	#DIV/0!	#DIV/0!	#DIV/0!	#DIV/0!	49%	27%
Citizen Voting Age Population		Hisp	0	0	0	0	0	0	32,843	32,843	#DIV/0!	#DIV/0!	#DIV/0!	#DIV/0!	#DIV/0!	#DIV/0!	#DIV/0!	#DIV/0!	49%	33%
Nor. 2014 Registration		Hisp	0	0	0	0	0	0	1,675	1,675	#DIV/0!	#DIV/0!	#DIV/0!	#DIV/0!	#DIV/0!	#DIV/0!	#DIV/0!	#DIV/0!	2%	2%
		NH Wht	0	0	0	0	0	0	2,630	2,630	#DIV/0!	#DIV/0!	#DIV/0!	#DIV/0!	#DIV/0!	#DIV/0!	#DIV/0!	#DIV/0!	2%	14%
		NH Blk	0	0	0	0	0	0	2,630	2,630	#DIV/0!	#DIV/0!	#DIV/0!	#DIV/0!	#DIV/0!	#DIV/0!	#DIV/0!	#DIV/0!	2%	14%
		NH Asn	0	0	0	0	0	0	63,996	63,996	#DIV/0!	#DIV/0!	#DIV/0!	#DIV/0!	#DIV/0!	#DIV/0!	#DIV/0!	#DIV/0!	60%	33%
Total Reg.		0	0	0	0	0	0	0	13,574	13,574	#DIV/0!	#DIV/0!	#DIV/0!	#DIV/0!	#DIV/0!	#DIV/0!	#DIV/0!	#DIV/0!	1%	8%
Nor. 2014 Votes		Hispanic	0	0	0	0	0	0	461	461	#DIV/0!	#DIV/0!	#DIV/0!	#DIV/0!	#DIV/0!	#DIV/0!	#DIV/0!	#DIV/0!	0%	3%
		NH Wht	0	0	0	0	0	0	151	151	#DIV/0!	#DIV/0!	#DIV/0!	#DIV/0!	#DIV/0!	#DIV/0!	#DIV/0!	#DIV/0!	0%	4%
		NH Blk	0	0	0	0	0	0	164	164	#DIV/0!	#DIV/0!	#DIV/0!	#DIV/0!	#DIV/0!	#DIV/0!	#DIV/0!	#DIV/0!	0%	4%
		NH Asn	0	0	0	0	0	0	4,317	4,317	#DIV/0!	#DIV/0!	#DIV/0!	#DIV/0!	#DIV/0!	#DIV/0!	#DIV/0!	#DIV/0!	0%	11%
Total Votes		0	0	0	0	0	0	0	164	164	#DIV/0!	#DIV/0!	#DIV/0!	#DIV/0!	#DIV/0!	#DIV/0!	#DIV/0!	#DIV/0!	0%	4%

Pop	Total Population					Voting Age Population					Citizen Voting Age Population					Nor. 2014 Registration					
	NH Asn	total	Hisp	Wht	Blk	NH Asn	total	Hisp	Wht	Blk	NH Asn	total	Hisp	Wht	Blk	NH Asn	total	latino	asn	fil	tot
15	873	397	442	12	831	390	441	0	0	574	195	7	3	245	63	33					
96	1,784	741	899	74	1,915	730	1,140	0	45	1,299	435	14	7	555	140	36					
25	1,036	741	236	15	400	235	145	0	20	505	286	3	4	161	73	39					
84	1,272	464	685	62	1,231	461	639	19	111	1,022	366	11	11	391	89	39					
79	1,639	144	1,392	64	1,511	88	1,337	12	38	1,776	146	46	7	1,089	67	40					
39	517	37	440	26	471	22	423	3	15	525	38	15	2	337	18	42					
16	1,945	767	1,178	16	780	115	1,100	0	0	777	378	7	4	241	70	45					

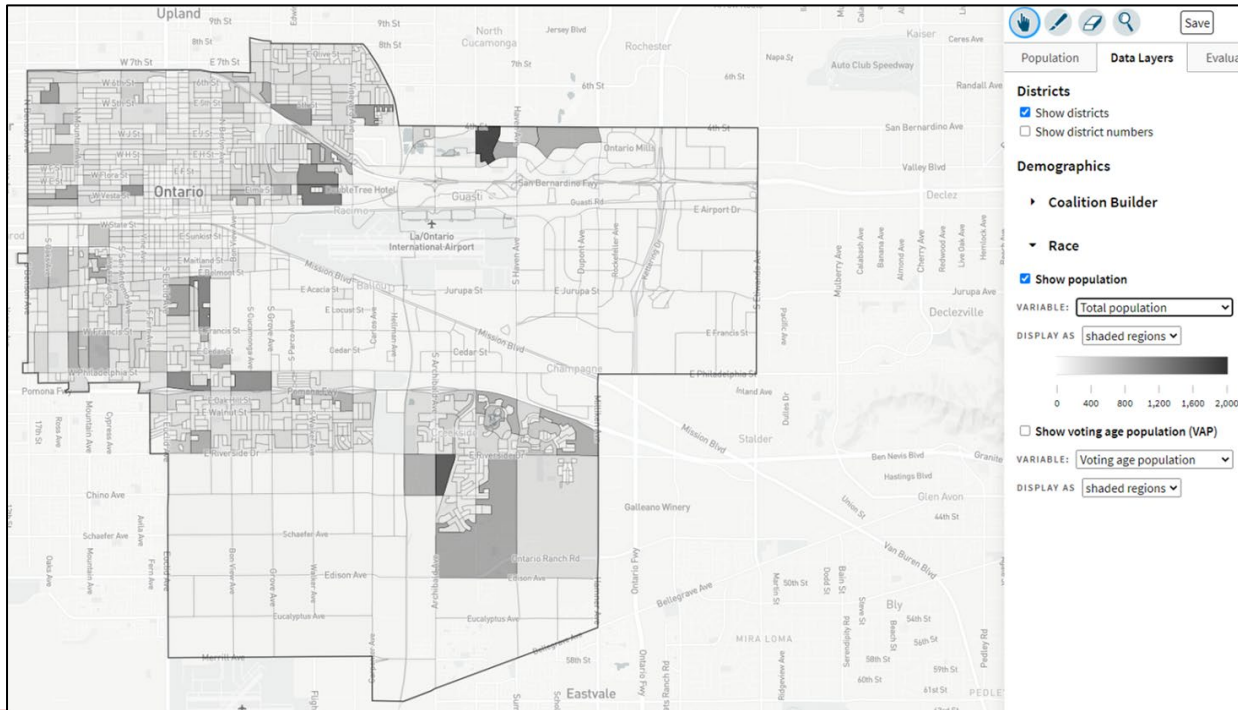


October 12, 2021

DistrictR

“Draw Your Community of Interest” focus

- Also includes simple district-mapping tool
- Only available in English



Caliper's Maptitude Online Redistricting

Full Database, Powerful Online Mapping Tool

- ❑ Powerful, common, data-rich online tool
- ❑ Six language options: English, Spanish, Portuguese, Vietnamese, Mandarin and Korean

