

# Sierra Joint CCD 2021/22 Districting

## Proposed Map #4

### Election Sequencing:

Area 1 - Trustee Romness (2022)

Area 2 - Trustee Bancroft (2022)

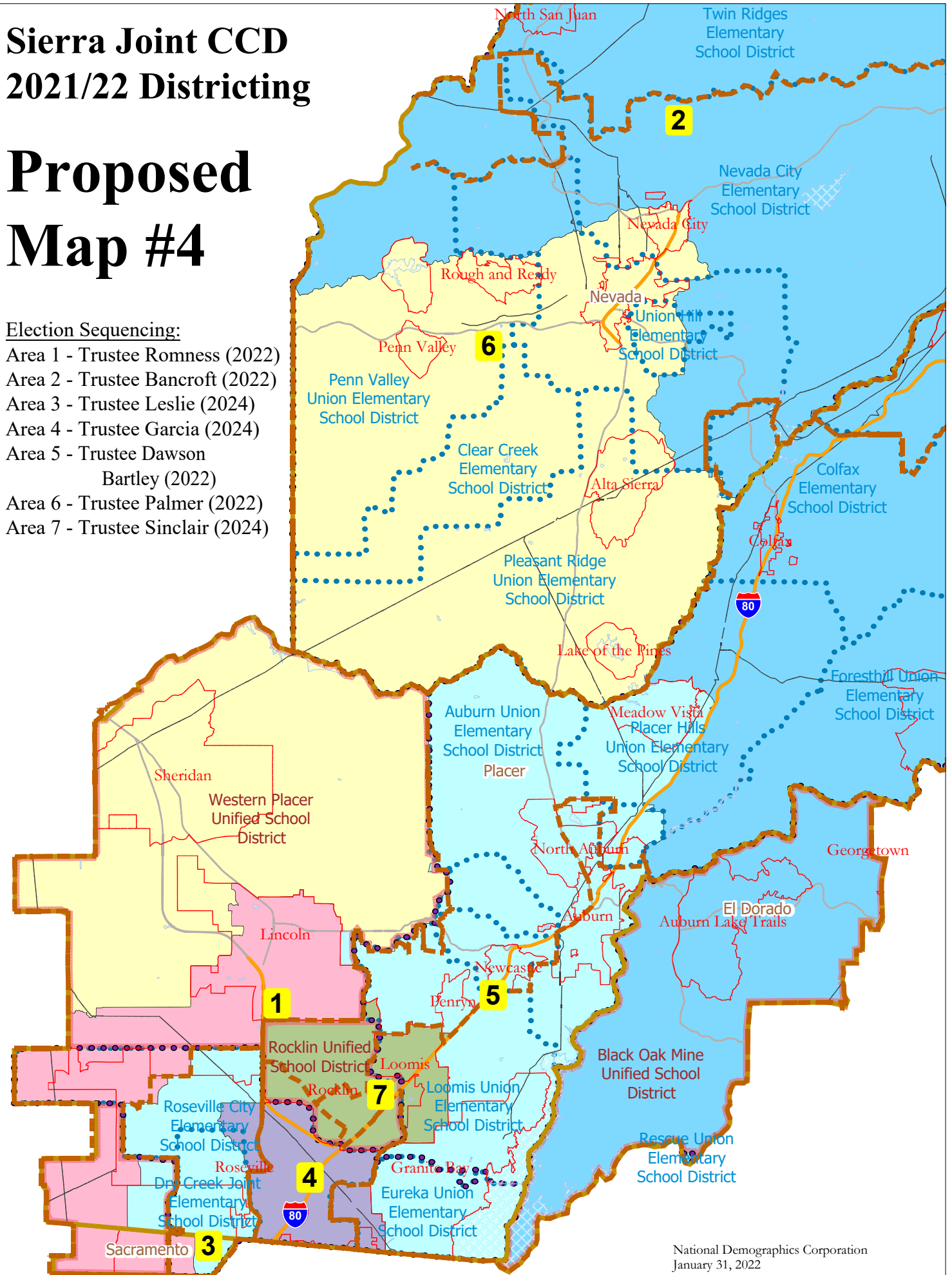
Area 3 - Trustee Leslie (2024)

Area 4 - Trustee Garcia (2024)

Area 5 - Trustee Dawson  
Bartley (2022)

Area 6 - Trustee Palmer (2022)

Area 7 - Trustee Sinclair (2024)



National Demographics Corporation  
January 31, 2022

Sierra Community College District - NDC Plan 201									
Category	Field	1	2	3	4	5	6	7	Total
2020 Census	Total Population	84,975	78,304	82,333	82,305	79,773	77,947	78,605	564,242
	Population Deviation	4,369	-2,302	1,727	1,699	-833	-2,659	-2,001	7,028
	Pct. Deviation	5.42%	-2.86%	2.14%	2.11%	-1.03%	-3.30%	-2.48%	8.72%
Total Pop.	Hispanic/Latino	19%	12%	14%	18%	11%	10%	14%	14%
	NH White	59%	79%	59%	63%	77%	80%	66%	69%
	NH Black	6%	1%	4%	3%	1%	1%	2%	3%
	NH Asian/Pac.Isl.	12%	4%	20%	13%	7%	5%	15%	11%
	NH Native Amer.	2%	3%	1%	2%	3%	3%	2%	2%
Citizen Voting Age Pop	Total	56,900	60,108	51,787	57,395	63,798	61,608	50,783	402,379
	Hisp	15%	7%	11%	14%	7%	8%	11%	10%
	NH White	68%	89%	70%	74%	85%	87%	77%	79%
	NH Black	6%	1%	2%	3%	1%	1%	2%	2%
	Asian/Pac.Isl.	11%	3%	16%	8%	6%	4%	9%	8%
	Native Amer.	1%	2%	1%	1%	2%	2%	1%	1%
Voter Registration (Nov 2020)	Total	52,280	56,784	53,578	51,627	58,939	55,826	50,650	379,684
	Latino est.	13%	6%	11%	12%	6%	6%	10%	9%
	Spanish-Surnamed	12%	6%	11%	11%	6%	6%	9%	8%
	Asian-Surnamed	4%	1%	6%	4%	3%	1%	4%	3%
	Filipino-Surnamed	1%	1%	2%	1%	1%	1%	2%	1%
	NH White est.	76%	91%	74%	81%	90%	92%	83%	84%
	NH Black	6%	0%	2%	3%	1%	1%	2%	2%
Voter Turnout (Nov 2020)	Total	44,429	48,981	46,792	43,933	52,146	48,071	44,175	328,527
	Latino est.	12%	5%	11%	11%	5%	5%	9%	8%
	Spanish-Surnamed	11%	5%	10%	10%	5%	5%	9%	8%
	Asian-Surnamed	4%	1%	6%	4%	3%	1%	4%	3%
	Filipino-Surnamed	1%	1%	2%	1%	1%	1%	2%	1%
	NH White est.	76%	91%	74%	81%	90%	92%	83%	84%
	NH Black	6%	0%	2%	3%	1%	1%	2%	2%
Voter Turnout (Nov 2018)	Total	30,960	38,643	31,966	31,313	41,063	38,611	30,654	243,210
	Latino est.	10%	4%	9%	9%	5%	5%	8%	7%
	Spanish-Surnamed	10%	4%	9%	9%	5%	4%	7%	7%
	Asian-Surnamed	3%	1%	5%	3%	2%	1%	4%	3%
	Filipino-Surnamed	1%	0%	2%	1%	0%	0%	1%	1%
	NH White est.	79%	92%	78%	83%	91%	93%	85%	87%
	NH Black est.	5%	0%	2%	2%	1%	1%	2%	2%
Age	age0-19	27%	20%	29%	24%	22%	20%	29%	24%
	age20-60	48%	50%	49%	54%	46%	44%	53%	49%
	age60plus	25%	30%	22%	22%	32%	36%	19%	27%
Immigration	immigrants	19%	6%	17%	13%	8%	5%	11%	11%
	naturalized	64%	50%	76%	64%	62%	59%	62%	65%
Language spoken at home	english	71%	91%	78%	83%	89%	92%	86%	84%
	spanish	11%	6%	4%	7%	6%	4%	4%	6%
	asian-lang	5%	0%	7%	4%	2%	1%	4%	3%
	other lang	12%	3%	10%	6%	4%	3%	5%	6%
Language Fluency	Speaks Eng. "Less than Very Well"	10%	2%	6%	5%	3%	2%	4%	5%
Education (among those age 25+)	hs-grad	53%	48%	41%	44%	42%	51%	39%	46%
	bachelor	20%	26%	31%	27%	25%	21%	30%	25%
	graduatedegree	10%	12%	12%	12%	15%	12%	15%	13%
Child in Household	child-under18	35%	25%	39%	32%	27%	22%	38%	31%
Pct of Pop. Age 16+	employed	59%	61%	61%	65%	56%	53%	66%	60%
Household Income	income 0-25k	12%	15%	10%	13%	14%	18%	10%	13%
	income 25-50k	16%	16%	12%	15%	15%	24%	13%	16%
	income 50-75k	17%	16%	14%	18%	14%	16%	13%	16%
	income 75-200k	46%	42%	50%	42%	40%	35%	49%	43%
	income 200k-plus	8%	10%	15%	11%	17%	7%	15%	12%
Housing Stats	single family	89%	89%	91%	71%	87%	90%	79%	86%
	multi-family	11%	11%	9%	29%	13%	10%	21%	14%
	rented	27%	23%	20%	43%	22%	28%	32%	28%
	owned	73%	77%	80%	57%	78%	72%	68%	72%
Total population data from California's adjusted 2020 Census data. Citizen Voting Age Population, Age, Immigration, and other demographics from the 2015-2019 American Community Survey and Special Tabulation 5-year data. Turnout and Registration data from California Statewide Database ("Latino" figures calculated by NDC using Census Bureau's Latino undercount by surname estimate).									