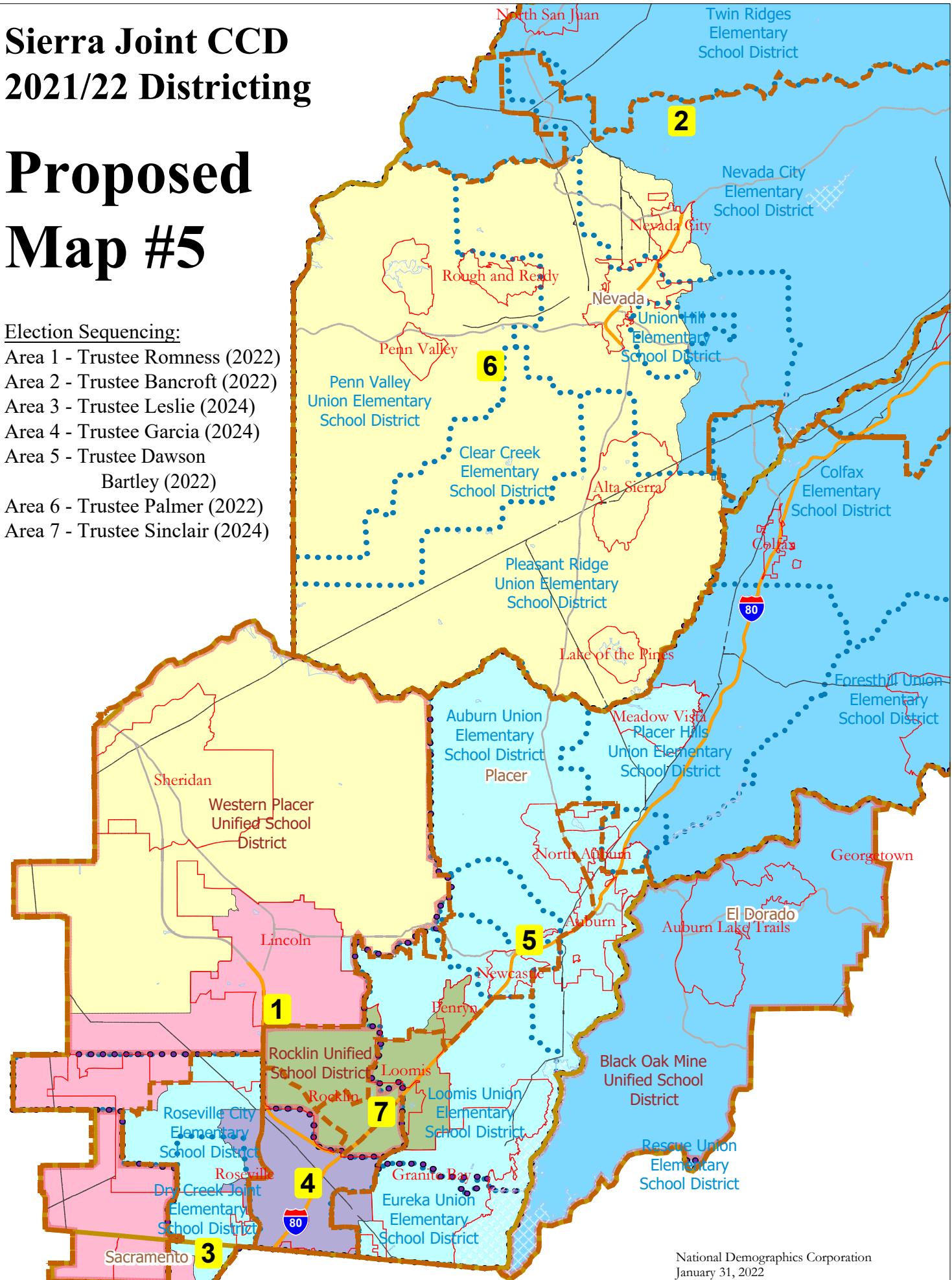


Sierra Joint CCD 2021/22 Districting

Proposed Map #5

Election Sequencing:

- Area 1 - Trustee Romness (2022)
- Area 2 - Trustee Bancroft (2022)
- Area 3 - Trustee Leslie (2024)
- Area 4 - Trustee Garcia (2024)
- Area 5 - Trustee Dawson
Bartley (2022)
- Area 6 - Trustee Palmer (2022)
- Area 7 - Trustee Sinclair (2024)



National Demographics Corporation
January 31, 2022

Sierra Community College District - NDC Plan 201a

Category	Field	1	2	3	4	5	6	7	Total
2020 Census	Total Population	82,726	75,219	82,247	82,686	81,491	80,046	79,827	564,242
	Population Deviation	2,120	-5,387	1,641	2,080	885	-560	-779	7,507
	Pct. Deviation	2.63%	-6.68%	2.04%	2.58%	1.10%	-0.69%	-0.97%	9.31%
Total Pop.	Hispanic/Latino	19%	13%	14%	19%	11%	10%	14%	14%
	NH White	60%	79%	58%	62%	76%	81%	66%	69%
	NH Black	6%	1%	4%	3%	1%	1%	2%	3%
	NH Asian/Pac.Isl.	12%	4%	20%	13%	8%	5%	15%	11%
	NH Native Amer.	2%	3%	1%	2%	3%	3%	2%	2%
Citizen Voting Age Pop	Total	55,829	57,729	50,977	57,944	64,826	63,342	51,731	402,379
	Hisp	15%	7%	10%	15%	7%	7%	11%	10%
	NH White	68%	89%	69%	74%	84%	88%	78%	79%
	NH Black	6%	1%	3%	3%	1%	1%	2%	2%
	Asian/Pac.Isl.	11%	3%	17%	8%	7%	4%	9%	8%
	Native Amer.	1%	2%	1%	1%	2%	2%	1%	1%
Voter Registration (Nov 2020)	Total	51,706	54,279	52,944	51,446	60,399	57,411	51,499	379,684
	Latino est.	13%	6%	11%	12%	6%	6%	10%	9%
	Spanish-Surnamed	12%	6%	11%	12%	6%	5%	9%	8%
	Asian-Surnamed	4%	1%	6%	4%	3%	1%	4%	3%
	Filipino-Surnamed	1%	1%	2%	1%	1%	1%	1%	1%
	NH White est.	77%	91%	73%	81%	90%	92%	83%	84%
NH Black	5%	0%	3%	2%	1%	1%	2%	2%	
Voter Turnout (Nov 2020)	Total	44,047	46,828	46,187	43,592	53,501	49,451	44,921	328,527
	Latino est.	12%	5%	11%	12%	5%	5%	9%	8%
	Spanish-Surnamed	11%	5%	10%	11%	5%	5%	9%	8%
	Asian-Surnamed	4%	1%	6%	4%	3%	1%	4%	3%
	Filipino-Surnamed	1%	1%	2%	1%	1%	1%	1%	1%
	NH White est.	77%	91%	73%	81%	90%	92%	83%	84%
NH Black	5%	0%	3%	2%	1%	1%	2%	2%	
Voter Turnout (Nov 2018)	Total	30,554	36,810	31,559	30,870	42,062	40,109	31,246	243,210
	Latino est.	10%	4%	9%	10%	5%	4%	8%	7%
	Spanish-Surnamed	10%	4%	9%	9%	5%	4%	7%	7%
	Asian-Surnamed	3%	1%	5%	3%	3%	1%	4%	3%
	Filipino-Surnamed	1%	0%	2%	1%	0%	0%	1%	1%
	NH White est.	80%	92%	78%	83%	91%	93%	85%	87%
NH Black est.	5%	0%	3%	2%	1%	1%	2%	2%	
Age	age0-19	27%	20%	29%	24%	22%	19%	28%	24%
	age20-60	48%	50%	49%	54%	47%	44%	52%	49%
	age60plus	25%	30%	21%	21%	31%	37%	19%	27%
Immigration	immigrants	18%	6%	18%	12%	8%	5%	11%	11%
	naturalized	64%	50%	76%	63%	63%	58%	62%	65%
Language spoken at home	english	72%	91%	77%	82%	88%	93%	86%	84%
	spanish	12%	6%	4%	8%	6%	3%	4%	6%
	asian-lang	5%	0%	8%	4%	2%	1%	4%	3%
	other lang	11%	3%	11%	6%	4%	3%	5%	6%
Language Fluency	Speaks Eng. "Less than Very Well"	10%	2%	7%	5%	3%	2%	4%	5%
Education (among those age 25+)	hs-grad	53%	48%	41%	45%	42%	50%	40%	46%
	bachelor	20%	26%	30%	26%	25%	21%	30%	25%
	graduatedegree	10%	12%	12%	11%	16%	12%	15%	13%
Child in Household	child-under18	35%	25%	40%	32%	28%	22%	38%	31%
Pct of Pop. Age 16+	employed	59%	61%	61%	65%	56%	52%	65%	60%
Household Income	income 0-25k	12%	15%	10%	13%	13%	18%	10%	13%
	income 25-50k	16%	16%	12%	16%	15%	24%	13%	16%
	income 50-75k	17%	16%	14%	19%	13%	16%	13%	16%
	income 75-200k	46%	42%	50%	43%	40%	35%	49%	43%
	income 200k-plus	9%	10%	14%	10%	18%	7%	15%	12%
Housing Stats	single family	90%	88%	91%	72%	87%	90%	80%	86%
	multi-family	10%	12%	9%	28%	13%	10%	20%	14%
	rented	27%	23%	20%	43%	23%	27%	32%	28%
	owned	73%	77%	80%	57%	77%	73%	68%	72%

Total population data from California's adjusted 2020 Census data. Citizen Voting Age Population, Age, Immigration, and other demographics from the 2015-2019 American Community Survey and Special Tabulation 5-year data. Turnout and Registration data from California Statewide Database ("Latino" figures calculated by NDC using Census Bureau's Latino undercount by surname estimate).