

**French**

**Liberal Arts**

FREN	Fall 09	Spring 10	Fall 10	Spring 11	Fall 11	Spring 12	3 Yr Avg
FTEF	37	32	30	31	29	28	31
WSCH	1,135	991	933	972	888	877	966
FTEF Total	2.81	2.41	2.32	2.59	2.23	1.91	2.38
Efficiency (WSCH/FTEF)	404	411	402	376	399	459	408
Fill Rate	91.5%	89.5%	84.0%	81.4%	80.5%	85.5%	85.4%
AveSize	23.0	22.4	18.7	18	20	17.7	20
Enrollment End of Courses	205	179	168	180	161	159	175
NumberOfSections	9	8	9	10	8	9	9
Department Retention	75%	84%	88%	82%	81%	91%	83%
Department Success	58%	73%	71%	71%	70%	79%	70%

(28, 95, 450 and 800 courses removed from totals above)

0 0 0 0

Enrollment by Location	Fall 09	Spring 10	Fall 10	Spring 11	Fall 11	Spring 12	3 Yr Avg
District Total	205	179	168	180	161	159	175
Roseville Gateway							
Rocklin Campus	167	135	153	132	145	159	149
Tahoe Truckee	15			15			15
Western Nevada County	23	44	15	33	16		26
Distance Learning							

Ethnicity	Fall 09	Spring 10	Fall 10	Spring 11	Fall 11	Spring 12	3 Yr Avg
African American Retention	67%	50%	67%	56%	33%	80%	59%
African American Success	33%	0%	50%	44%	33%	60%	37%
Hispanic Retention	63%	88%	95%	82%	81%	95%	84%
Hispanic Success	38%	69%	63%	73%	71%	84%	66%
District Retention	86%	84%	85%	86%	85%	85%	85%
District Success	71%	70%	71%	72%	71%	71%	71%
District Efficiency	518	526	513	507	498	512	512
District Fill Rate	100.9%	102.5%	102.3%	102.4%	100.7%	104.2%	102%

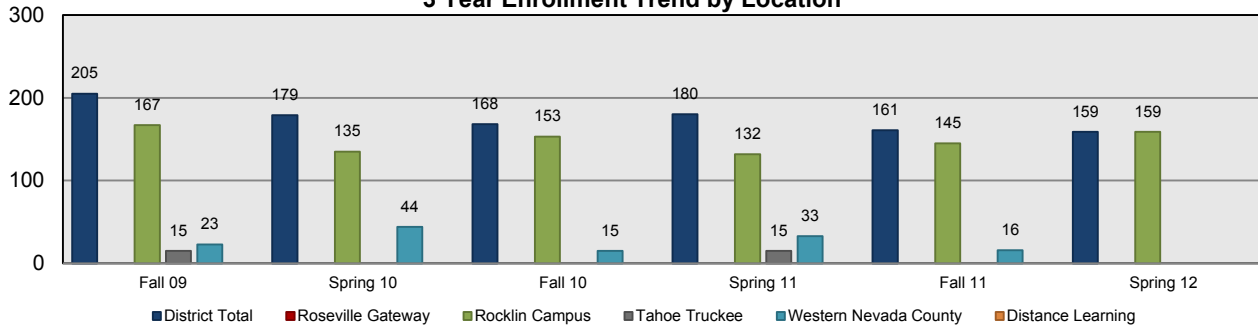
Instructional FTEF by Load Type	Fall 09	Spring 10	Fall 10	Spring 11	Fall 11	Spring 12	3 Yr Avg
FT	0.80	0.94	0.90	0.80	0.80	0.80	0.84
PT	2.01	1.47	1.43	1.79	1.43	0.80	1.49
OV							
<b>Total FTEF</b>	<b>2.81</b>	<b>2.42</b>	<b>2.32</b>	<b>2.59</b>	<b>2.23</b>	<b>1.60</b>	<b>2.33</b>

FT/PT Ratio (FT%)	Fall 09	Spring 10	Fall 10	Spring 11	Fall 11	Spring 12	3 Yr Avg
Dept	42%	48%	43%	39%	45%	56%	45%
Rocklin	62%	64%	50%	61%	50%	56%	57%
NCC	0%	0%	0%	0%	0%		0%
RG							
TT	0%			0%			0%
DL							

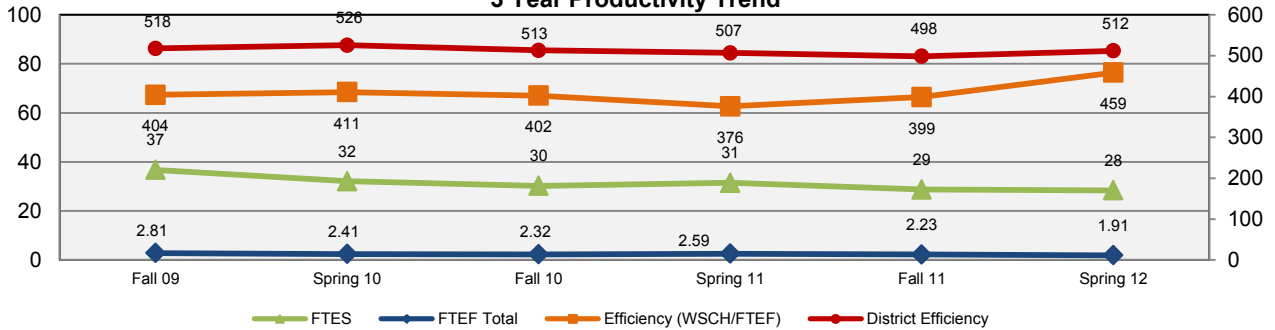
Staff Headcount	Fall 09	Spring 10	Fall 10	Spring 11	Fall 11	Spring 12	3 Yr Avg
FT	1	1	1	1	1	1	1.00
PT	4	3	4	4	3	2	3.33

Budget Information				
French	Account	2011 Actuals	2012 Actuals	2013 Adopted
Foreign Languages General Total 110100 - \$86,570, and \$84,023	110200	1000		
		2000		
		3000		
		4000		
		5000		
		6000		
		7000		
	8000			
Total \$		-		

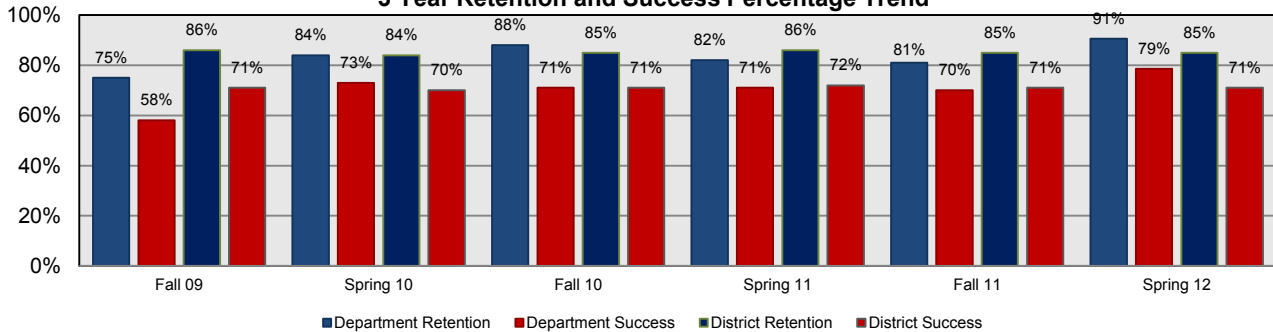
**3 Year Enrollment Trend by Location**



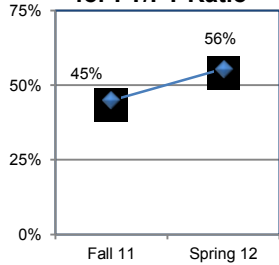
**3 Year Productivity Trend**



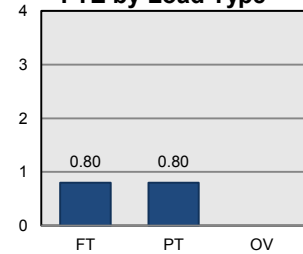
**3 Year Retention and Success Percentage Trend**



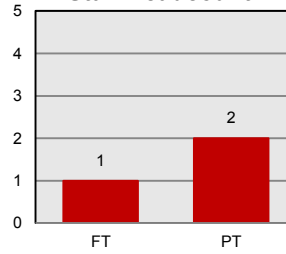
**2011/12 FT% for FT/PT Ratio**



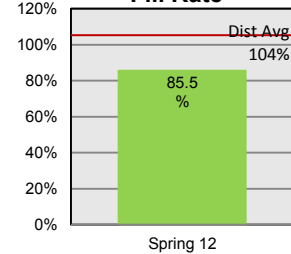
**Spring 2012 FTE by Load Type**



**Spring 2012 Staff Headcount**



**Spring 2012 Fill Rate**



<b>Curriculum Currency SP 2012</b>
100%

Program	Outcomes	Assessments	Results	Actions	Follow Ups
Outcomes:	5	6	4	0	0