

Perceptual Training

Student Services

PRCP	Fall 11	Spring 12	Fall 12	Spring 13	Fall 13	Spring 14	3 Yr Avg
FTES	1	1	1	1	1	1	0.83
WSCH	19	24	32	31	26	25	26.27
FTEF Total			-	-	-	-	0.0
Efficiency (WSCH/FTEF)			-	-	-	-	0.00
Fill Rate	30.0%	75.0%	90.0%	95.0%	85.0%	80.0%	76%
AveSize	3	7.5	9.0	10	8.5	8	7.67
NumberOfSections	3	2	2	2	2	2	2.17
Department Retention	100%	93%	89%	95%	94%	100%	95%
Department Success	89%	87%	89%	95%	82%	94%	89%
Online Retention					NULL	NULL	#DIV/0!
Online Success					NULL	NULL	#DIV/0!

(28, 95,450, 800 Courses are removed from Total)

Enrollment by Location	Fall 11	Spring 12	Fall 12	Spring 13	Fall 13	Spring 14	3 Yr Avg
District Total	9	15	18	19	17	16	16
Roseville Gateway							#DIV/0!
Rocklin Campus	9	15	18	19	17	16	16
Tahoe Truckee							#DIV/0!
Western Nevada County							#DIV/0!
Distance Learning							#DIV/0!

Ethnicity	Fall 11	Spring 12	Fall 12	Spring 13	Fall 13	Spring 14	3 Yr Avg
African American Retention	NULL	NULL	100%	100%	100%	100%	100%
African American Success	NULL	NULL	100%	100%	100%	100%	100%
Amer Indian/Alaskan Nat Retention	NULL	100%	NULL	100%	0%	NULL	67%
Amer Indian/Alaskan Nat Success	NULL	100%	NULL	100%	0%	NULL	67%
Asian Retention	NULL	NULL	100%	NULL	NULL	NULL	100%
Asian Success	NULL	NULL	100%	NULL	NULL	NULL	100%
Filipino Retention	NULL	NULL	NULL	NULL	100%	NULL	100%
Filipino Success	NULL	NULL	NULL	NULL	100%	NULL	100%
Hispanic Retention	100%	75%	80%	100%	100%	100%	93%
Hispanic Success	100%	75%	80%	100%	100%	100%	93%
Pacific Islander Retention	NULL	NULL	100%	NULL	NULL	NULL	100%
Pacific Islander Success	NULL	NULL	100%	NULL	NULL	NULL	100%
White Retention	100%	100%	86%	92%	100%	100%	96%
White Success	88%	88%	86%	92%	83%	92%	88%

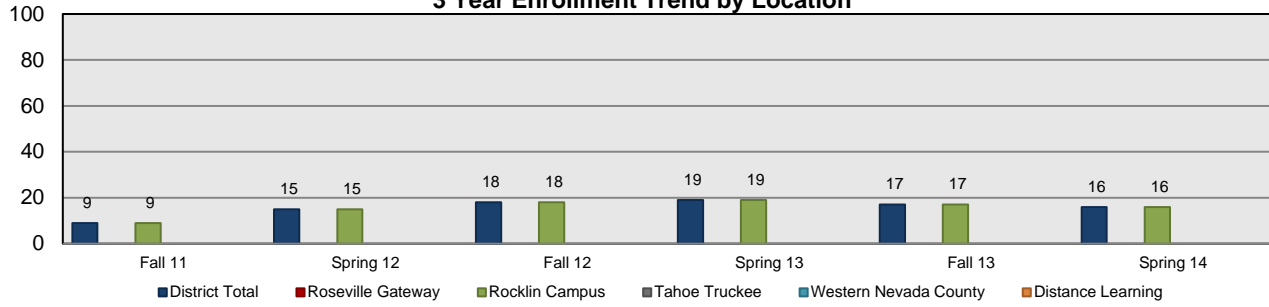
Instructional FTEF by Load Type	Fall 11	Spring 12	Fall 12	Spring 13	Fall 13	Spring 14	3 Yr Avg
FT	0.00	0.00	0.00	0.00	0.00	0.00	0.00
PT	0.00	0.00	0.00	0.00	0.00	0.00	0.00
OV	0.00	0.00	0.00	0.00	0.00	0.00	0.00
Total FTEF	0.00	0.00	0.00	0.00	0.00	0.00	0.00

FT/PT Ratio (FT%)	Fall 11	Spring 12	Fall 12	Spring 13	Fall 13	Spring 14	3 Yr Avg
Dept							#DIV/0!
Rocklin							#DIV/0!
NCC							#DIV/0!
RG							#DIV/0!
TT							#DIV/0!
DL							#DIV/0!

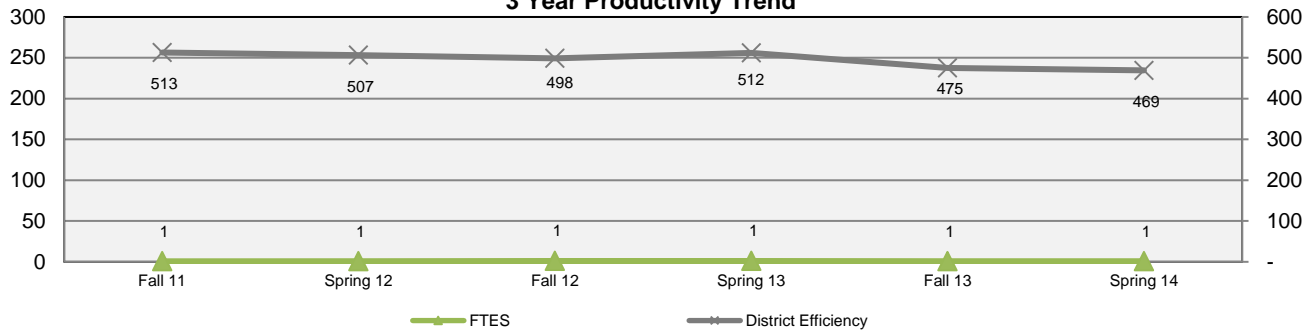
Staff Headcount	Fall 11	Spring 12	Fall 12	Spring 13	Fall 13	Spring 14	3 Yr Avg
FT Assigned					0	0	0
FT	0	0	0	0	1	1	0.33
PT	0	0	2	2	0	0	0.67

District Information	Fall 12	Spring 13	Fall 13	Spring 14	Fall 13	Spring 14	3 Yr Avg
District Enrollment	57,469	55,998	54,620	53,368	55,405	54190	55,175
District Retention	85%	86%	85%	85%	86%	86%	86%
District Success	71%	72%	71%	71%	72%	72%	72%
District Efficiency	513	507	498	512	475	469	496
District Fill Rate	102.3%	102.4%	100.7%	104.2%	96.1%	94.8%	100.1%

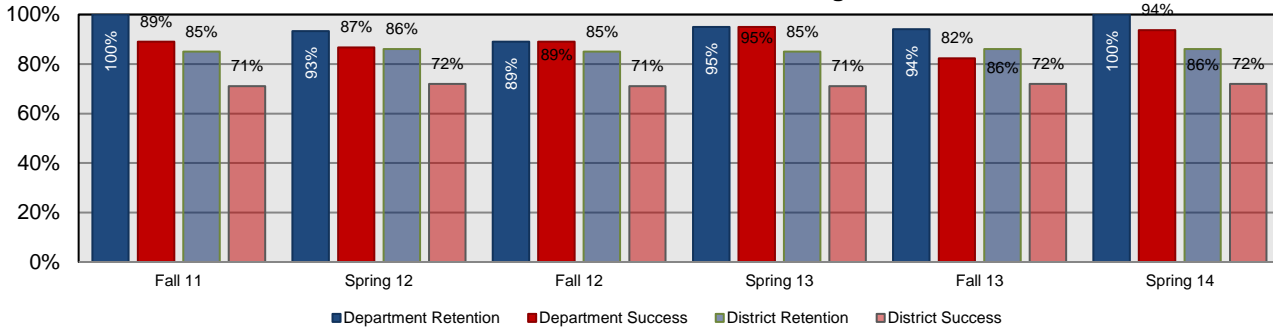
3 Year Enrollment Trend by Location



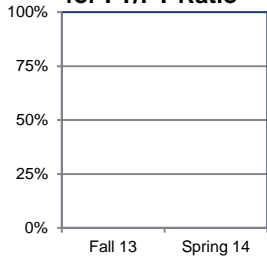
3 Year Productivity Trend



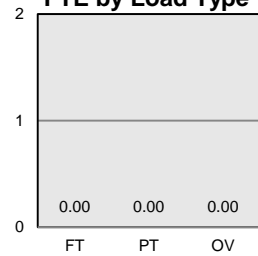
3 Year Retention and Success Percentage Trend



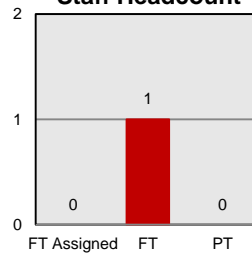
2013/14 FT% for FT/PT Ratio



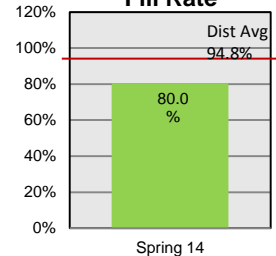
Spring 2014 FTE by Load Type



Spring 2014 Staff Headcount



Spring 2014 Fill Rate



Course Outcomes	# of Active Courses	# with Outcomes	# with Assessments	# with Results	# with Actions	# with Follow Ups
Program Outcomes	# of	Outcomes	Assessments	Results	Actions	Follow Ups
Curriculum Currency SP 14						