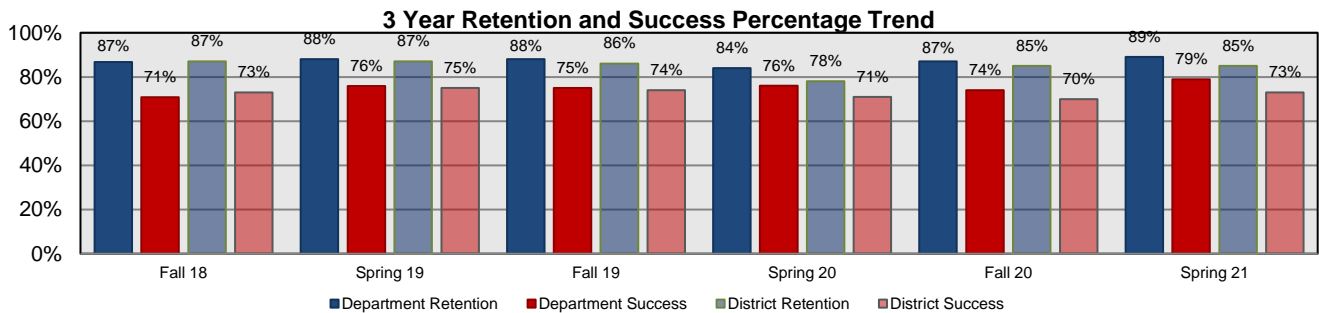
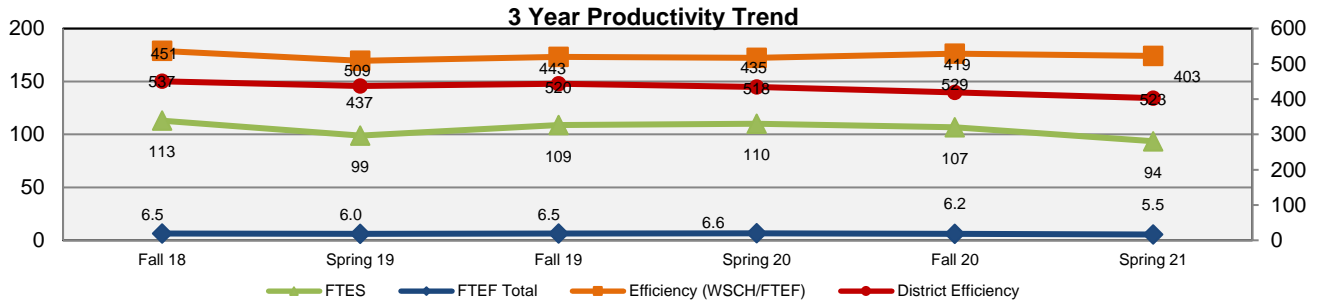
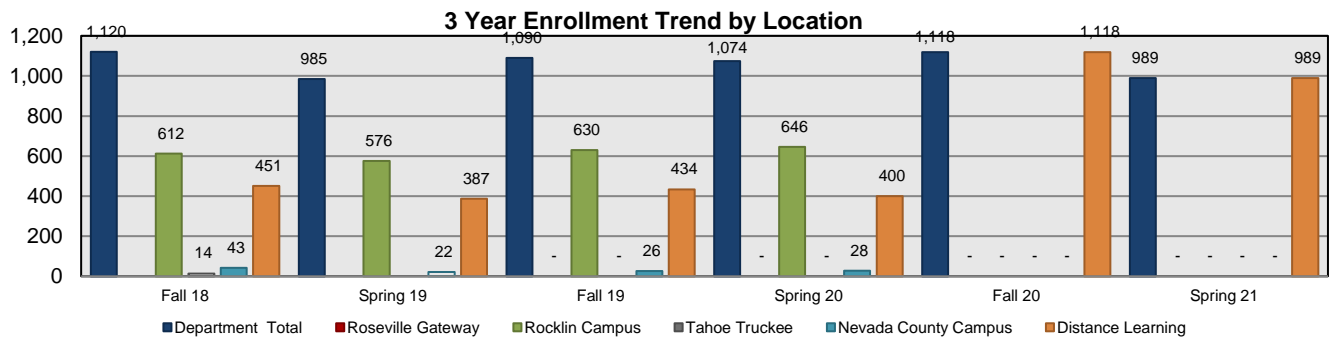


SOC	Fall 18	Spring 19	Fall 19	Spring 20	Fall 20	Spring 21	3 Yr Avg
FTES	113	99	109	110	107	94	105
FTEF Total	6.5	6.0	6.5	6.6	6.2	5.5	6.2
Efficiency (WSCH/FTEF)	537	509	520	518	529	523	522.3
Fill Rate	90.0%	86.0%	81.0%	82.0%	93.0%	92.0%	87.3%
AveSize	33.9	31.8	31.1	31.6	32.9	33.0	32.4
# of Sections	33	31	35	34	34	30	33
Department Retention	87%	88%	88%	84%	87%	89%	87%
Department Success	71%	76%	75%	76%	74%	79%	75%
Online Retention	83%	81%	85%	85%	87%	89%	85%
Online Success	68%	72%	71%	80%	74%	79%	74%

(28, 95,450 and 800 Courses)



Enrollment by Location	Fall 18	Spring 19	Fall 19	Spring 20	Fall 20	Spring 21	3 Yr Avg
Department Total	1,120	985	1,090	1,074	1,118	989	1,063
Roseville Gateway			#DIV/0!
Rocklin Campus	612	576	630	646	.	.	616
Tahoe Truckee	14		14
Nevada County Campus	43	22	26	28	.	.	30
Distance Learning	451	387	434	400	1,118	989	630



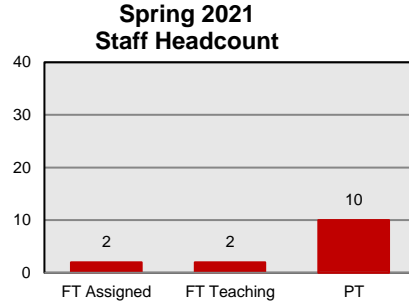
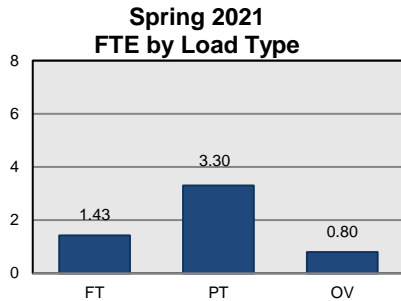
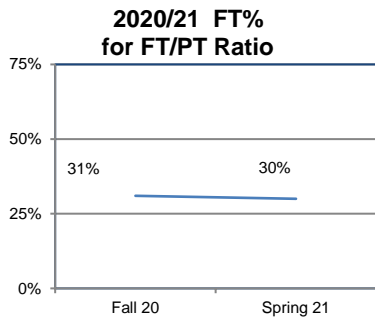
District Information	Fall 18	Spring 19	Fall 19	Spring 20	Fall 20	Spring 21	3 Yr Avg
District Enrollment	53,068	50,881	54,041	50,765	51,336	46,083	51,029
District Retention	87%	87%	86%	78%	85%	85%	85%
District Success	73%	75%	74%	71%	70%	73%	73%
District Efficiency	451	437	443	435	419	403	431
District Fill Rate	89.0%	87.0%	82.0%	77.0%	81.0%	77.0%	82.2%

Sociology

Liberal Arts

Instructional FTEF by Load Type	Fall 18	Spring 19	Fall 19	Spring 20	Fall 20	Spring 21	3 Yr Avg
FT	1.20	1.00	1.10	1.20	1.40	1.43	1.22
PT	4.50	4.21	4.70	4.50	3.90	3.30	4.19
OV	0.80	0.80	0.67	0.87	0.93	0.80	0.81
Total FTEF	6.50	6.01	6.47	6.57	6.23	5.53	6.22

FT/PT Ratio (FT%)	Fall 18	Spring 19	Fall 19	Spring 20	Fall 20	Spring 21	3 Yr Avg
Dept	24%	19%	22%	21%	31%	30%	25%
Rocklin	15%	14%	33%	18%	.	.	20%
NCC	0%	0%	0%	0%	.	.	0%
RC	#DIV/0!
TT	0%	0%
DL	47%	27%	13%	27%	31%	30%	29%



Staff Headcount	Fall 18	Spring 19	Fall 19	Spring 20	Fall 20	Spring 21	3 Yr Avg
FT Assigned	2	2	2	2	2	2	2.00
FT Teaching	2	2	2	2	2	2	2.00
PT	13	12	12	11	12	10	11.67

Majors	Fall 18	Spring 19	Fall 19	Spring 20	Fall 20	Spring 21	3 Yr Avg
Social Justice St for Transfer	15	12	24	21	31	26	21.50
Sociology for Transfer	154	140	138	145	149	145	145.17
							#DIV/0!
							#DIV/0!
							#DIV/0!
							#DIV/0!

Awards	2018-19	2019-20	2020-21	3 Yr Avg
AA				#DIV/0!
AS				#DIV/0!
AA-T	53	39	58	50.00
AS-T				#DIV/0!
Certificate				#DIV/0!
Total	53	39	58	50.00

Course Outcomes	# of Active Courses	# Courses Assessed	# Active Learning Outcomes	Outcomes Assessed
	13	4	44	21
Program Outcomes	# of Program Outcomes	Outcomes Assessed		
Curriculum Currency SP 16				

Active Course = Taught during the previous 3 years
 Active Learning Outcomes = Active Course outcomes
 Course Assessed = Course assessed and SAA submitted during the previous 3 years
 Outcomes Assessed = Outcomes assessed during the previous 3 yrs
 Program Outcomes = Active Program Level Outcomes

Sociology

Liberal Arts

Retention/Success by Ethnicity	Fall 18		Spring 19		Fall 19		Spring 20		Fall 20		Spring 21		3 Yr Avg
	Enr.	%	Enr.	%	Enr.	%	Enr.	%	Enr.	%	Enr.	%	
African American Ret.		82%		82%		74%		72%		85%		83%	80%
African American Succ.	149	61%	110	53%	69	61%	74	65%	72	64%	82	65%	61%
Amer Indian/Alaskan Nat Ret.		86%		90%		75%		50%		63%		100%	85%
Amer Indian/Alaskan Nat Succ.	36	58%	39	74%	4	50%	2	0%	8	25%	6	83%	62%
Asian Ret.		88%		87%		90%		90%		93%		94%	90%
Asian Succ.	51	78%	63	79%	58	81%	50	84%	54	83%	49	82%	81%
Filipino Ret.		92%		97%		81%		92%		97%		94%	92%
Filipino Succ.	48	79%	30	90%	37	81%	48	85%	29	76%	18	83%	82%
Hispanic/Latino Ret.		92%		83%		88%		85%		85%		87%	87%
Hispanic/Latino Succ.	212	73%	206	75%	264	72%	251	75%	276	69%	240	78%	73%
Pacific Islander Ret.		78%		100%		75%		89%		86%		100%	87%
Pacific Islander Succ.	9	56%	5	60%	12	58%	19	79%	7	71%	9	100%	72%
Other/Multi-Ethnic Ret.		86%		83%		84%		78%		85%		92%	84%
Other/Multi-Ethnic Succ.	37	76%	35	69%	80	73%	88	72%	103	65%	71	83%	72%
Unknown/Declined Ret.		67%		89%		95%		82%		77%		90%	85%
Unknown/Declined Succ.	6	67%	9	78%	38	76%	44	77%	26	62%	21	86%	75%
White Ret.		86%		91%		91%		85%		88%		89%	88%
White Succ.	572	72%	488	81%	528	78%	498	78%	543	79%	493	81%	78%
Disparate Threshold (Succ.)		58%		65%		62%		62%		63%		65%	63%

Retention/Success by Equity Pop.	Fall 18		Spring 19		Fall 19		Spring 20		Fall 20		Spring 21		3 Yr Avg
	Enr.	%	Enr.	%	Enr.	%	Enr.	%	Enr.	%	Enr.	%	
Students with Disabilities Ret.		85%		91%		92%		74%		83%		84%	85%
Students with Disabilities Succ.	65	78%	76	80%	71	82%	70	71%	58	72%	75	80%	78%
Foster Youth Ret.		81%		68%		78%		69%		67%		74%	73%
Foster Youth Succ.	27	48%	19	37%	23	52%	29	66%	24	42%	27	63%	52%
Low Income Ret.*		87%		87%		87%		80%		88%		88%	86%
Low Income Succ.*	733	70%	631	73%	586	73%	535	73%	577	73%	508	77%	73%
Veteran Ret.		97%		86%		88%		76%		76%		76%	84%
Veteran Succ.	32	81%	28	68%	33	70%	25	68%	21	62%	25	64%	70%
Female Ret.		88%		88%		88%		85%		88%		89%	88%
Female Succ.	737	72%	642	76%	734	75%	716	79%	757	76%	674	79%	76%
Male Ret.		85%		89%		89%		82%		84%		89%	86%
Male Succ.	364	68%	322	75%	333	76%	342	71%	338	68%	298	80%	73%
Other/Non-Discolsed Gender Ret.		84%		81%		87%		75%		83%		88%	83%
Other/Non-Discolsed Gender Succ.	19	68%	21	81%	23	70%	16	69%	23	74%	17	82%	74%

