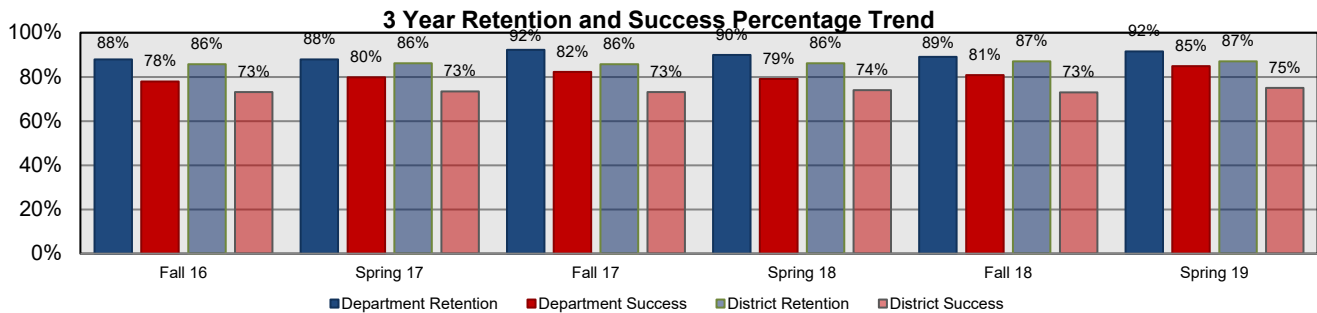
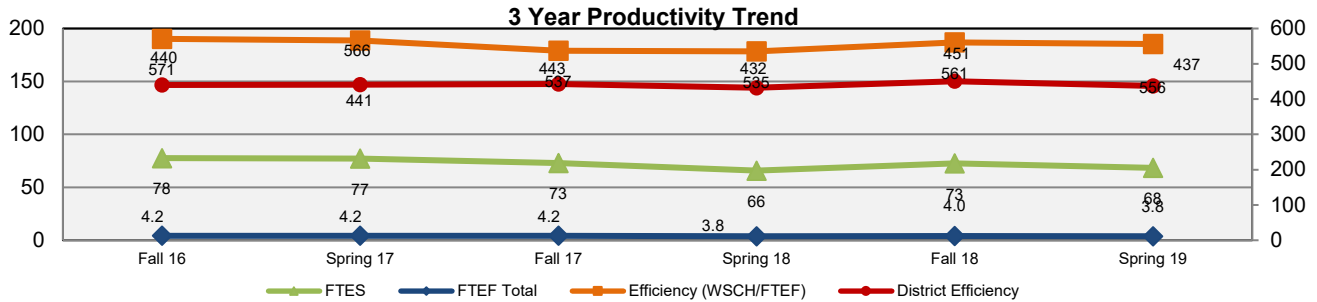


Economics

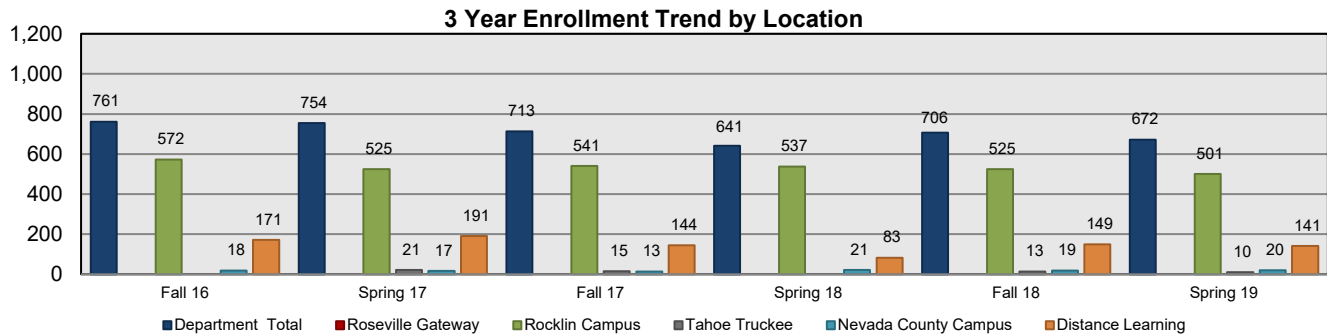
Liberal Arts

ECON	Fall 16	Spring 17	Fall 17	Spring 18	Fall 18	Spring 19	3 Yr Avg
FTES	78	77	73	66	73	68	72
FTEF Total	4.2	4.2	4.2	3.8	4.0	3.8	4.0
Efficiency (WSCH/FTEF)	571	566	537	535	561	556	554.2
Fill Rate	92.0%	93.0%	88.0%	86.0%	93.0%	92.0%	90.7%
AveSize	36.2	35.9	33.5	32.8	35.3	35.4	34.9
# of Sections	21	21	17	17	20	19	19
Department Retention	88%	88%	92%	90%	89%	92%	90%
Department Success	78%	80%	82%	79%	81%	85%	81%
Online Retention	77%	81%	77%	89%	82%	85%	82%
Online Success	67%	74%	71%	83%	72%	82%	75%

(28, 95,450 and 800 Courses)



Enrollment by Location	Fall 16	Spring 17	Fall 17	Spring 18	Fall 18	Spring 19	3 Yr Avg
Department Total	761	754	713	641	706	672	708
Roseville Gateway							#DIV/0!
Rocklin Campus	572	525	541	537	525	501	534
Tahoe Truckee		21	15		13	10	15
Nevada County Campus	18	17	13	21	19	20	18
Distance Learning	171	191	144	83	149	141	147



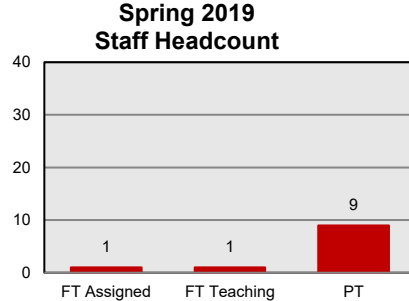
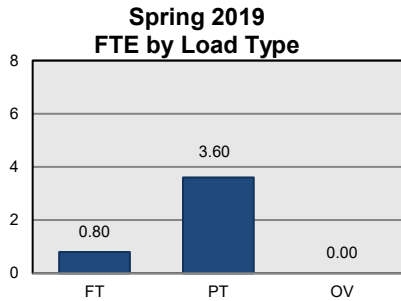
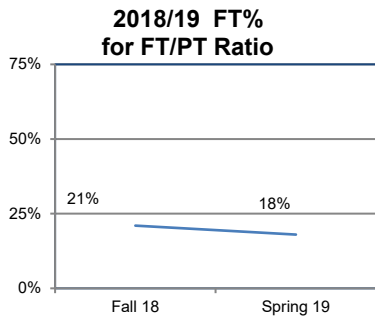
District Information	Fall 16	Spring 17	Fall 17	Spring 18	Fall 18	Spring 19	3 Yr Avg
District Enrollment	52,884	50,350	52,980	49,784	53,068	50,881	51,658
District Retention	86%	86%	86%	86%	87%	87%	86%
District Success	73%	73%	73%	74%	73%	75%	74%
District Efficiency	440	441	443	432	451	437	441
District Fill Rate	89.0%	88.0%	88.0%	85.0%	89.0%	87.0%	87.7%

Economics

Liberal Arts

Instructional FTEF by Load Type	Fall 16	Spring 17	Fall 17	Spring 18	Fall 18	Spring 19	3 Yr Avg
FT	1.00	0.80	0.80	1.00	0.80	0.80	0.87
PT	3.23	3.40	3.40	2.80	3.46	3.60	3.31
OV	0.00	0.00	0.00	0.00	0.12	0.00	0.02
Total FTEF	4.23	4.20	4.20	3.80	4.38	4.40	4.20

FT/PT Ratio (FT%)	Fall 16	Spring 17	Fall 17	Spring 18	Fall 18	Spring 19	3 Yr Avg
Dept	24%	23%	19%	26%	21%	18%	22%
Rocklin	33%	29%	27%	31%	31%	25%	29%
NCC	0%	0%	0%	0%	0%	0%	0%
RC							#DIV/0!
TT		0%	0%		0%	0%	0%
DL	0%	0%	0%	0%	0%	0%	0%



Staff Headcount	Fall 16	Spring 17	Fall 17	Spring 18	Fall 18	Spring 19	3 Yr Avg
FT Assigned	1	1	1	1	1	1	1.00
FT Teaching	1	1	1	1	1	1	1.00
PT	7	9	8	8	9	9	8.33

Majors	Fall 16	Spring 17	Fall 17	Spring 18	Fall 18	Spring 19	3 Yr Avg
Economics for Transfer	76	76	76	64	84	93	78.17
							#DIV/0!
							#DIV/0!
							#DIV/0!
							#DIV/0!

Awards	2016-17	2017-18	2018-19	3 Yr Avg
AA				#DIV/0!
AS				#DIV/0!
AA-T	14	20	26	20.00
AS-T				#DIV/0!
Certificate				#DIV/0!
Total	14	20	26	20.00

Course Outcomes	# of Active Courses	# Courses Assessed	# Active Learning Outcomes	Outcomes Assessed
	2	2	10	13
Program Outcomes	# of Program Outcomes	Outcomes Assessed		
Curriculum Currency SP 16				

Active Course = Taught during the previous 3 years Outcomes Assessed = Outcomes assessed during the previous 3 yrs
 Active Learning Outcomes = Active Course outcomes Program Outcomes = Active Program Level Outcomes
 Course Assessed = Course assessed and SAA submitted during the previous 3 years

Economics

Liberal Arts

Retention/Success by Ethnicity	Fall 16		Spring 17		Fall 17		Spring 18		Fall 18		Spring 19		3 Yr Avg
	Enr.	%	Enr.	%	Enr.	%	Enr.	%	Enr.	%	Enr.	%	
African American Ret.		73%	27	85%		91%		87%		97%		87%	87%
African American Succ.	30	43%		78%	33	79%	30	60%	35	71%	39	76%	68%
Amer Indian/Alaskan Nat Ret.		70%	15	87%		84%		76%		80%		94%	82%
Amer Indian/Alaskan Nat Succ.	10	60%		87%	19	79%	17	65%	15	80%	16	69%	74%
Asian Ret.		88%	85	89%		93%		88%		88%		91%	90%
Asian Succ.	73	78%		81%	60	88%	51	80%	59	81%	56	86%	82%
Filipino Ret.		92%	28	75%		80%		86%		64%		100%	83%
Filipino Succ.	25	88%		50%	10	80%	14	79%	11	36%	10	100%	70%
Hispanic/Latino Ret.		88%	124	85%		87%		89%		91%		90%	88%
Hispanic/Latino Succ.	130	78%		73%	107	73%	95	80%	112	80%	109	83%	78%
Pacific Islander Ret.		71%	7	71%						75%		100%	76%
Pacific Islander Succ.	7	71%		71%					4	75%	3	67%	71%
Other/Multi-Ethnic Ret.		100%	7	86%		96%		97%		92%		90%	93%
Other/Multi-Ethnic Succ.	5	100%		57%	25	84%	32	91%	25	84%	39	79%	84%
Unknown/Declined Ret.		100%	8	75%		100%		100%		100%		100%	93%
Unknown/Declined Succ.	6	83%		75%	5	100%	4	100%	1	100%	3	67%	85%
White Ret.		89%	453	90%		89%		90%		89%		92%	90%
White Succ.	475	80%		84%	454	80%	398	80%	444	83%	398	87%	82%
Disparate Threshold (Succ.)		64%		67%		64%		64%		66%		70%	66%

Retention/Success by Equity Pop.	Fall 16		Spring 17		Fall 17		Spring 18		Fall 18		Spring 19		3 Yr Avg
	Enr.	%	Enr.	%	Enr.	%	Enr.	%	Enr.	%	Enr.	%	
Students with Disabilities Ret.		83%	37	87%		81%		95%		77%		97%	87%
Students with Disabilities Succ.	36	69%		84%	32	75%	38	84%	30	60%	29	93%	78%
Foster Youth Ret.		100%				100%		100%		67%			93%
Foster Youth Succ.	4	50%			4	100%	3	100%	3	33%	0		71%
Low Income Ret.*		85%	255	87%		89%		89%		86%		90%	88%
Low Income Succ.*	241	77%		80%	350	80%	280	80%	344	77%	351	85%	80%
Veteran Ret.		90%	36	78%		89%		80%		94%		100%	86%
Veteran Succ.	19	74%		69%	9	78%	15	53%	17	88%	14	86%	74%
Female Ret.		88%	319	88%		87%		90%		87%		93%	89%
Female Succ.	319	79%		82%	315	77%	266	80%	296	78%	295	88%	81%
Male Ret.		88%	422	87%		91%		90%		90%		91%	90%
Male Succ.	433	77%		78%	392	82%	369	79%	403	82%	373	83%	80%
Other/Non-Disclosed Gender Ret.		89%	13	92%		100%		100%		100%		100%	96%
Other/Non-Disclosed Gender Succ.	9	89%		85%	6	100%	6	100%	7	100%	4	75%	91%

