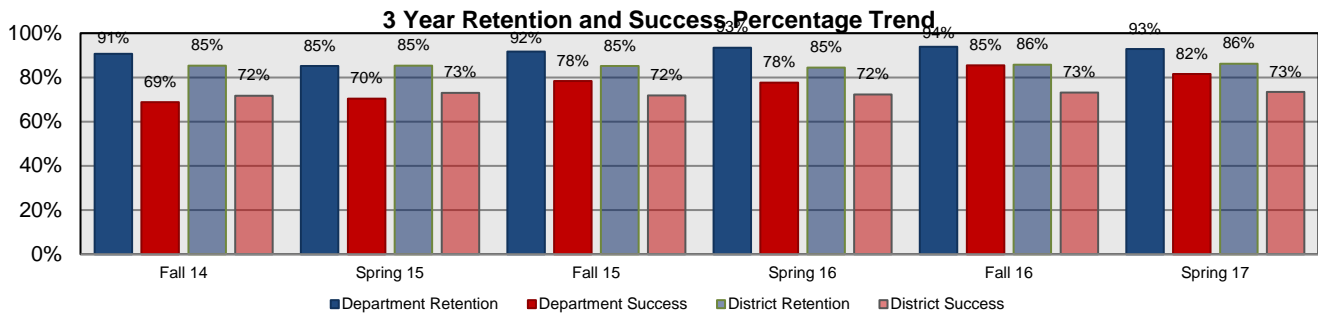
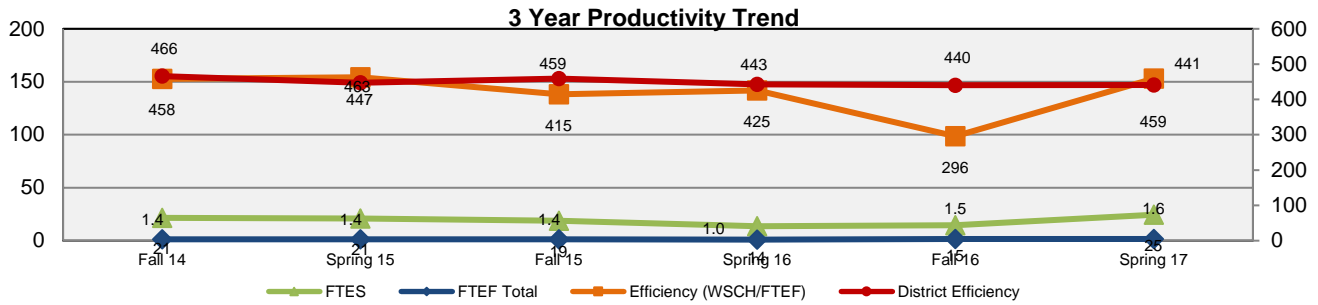


Environmental Studies and Sustainability

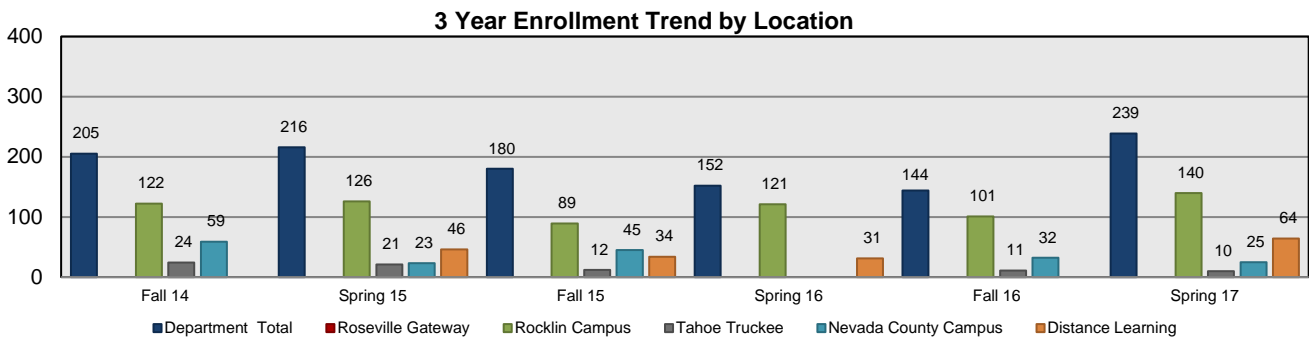
Science and Math

ESS	Fall 14	Spring 15	Fall 15	Spring 16	Fall 16	Spring 17	3 Yr Avg
FTES	21	21	19	14	15	25	19
FTEF Total	1.4	1.4	1.4	1.0	1.5	1.6	1.4
Efficiency (WSCH/FTEF)	458	463	415	425	296	459	419.3
Fill Rate	94.0%	87.0%	82.6%	89.4%	73.0%	96.0%	87.0%
AveSize	29.3	24.0	25.7	25.3			26.1
# of Sections	7	9	7	6			7
Department Retention	91%	85%	92%	93%	94%	93%	91%
Department Success	69%	70%	78%	78%	85%	82%	77%
Online Retention		74%	82%	94%		92%	86%
Online Success		52%	62%	77%		81%	68%

(28, 95,450 and 800 Courses)



Enrollment by Location	Fall 14	Spring 15	Fall 15	Spring 16	Fall 16	Spring 17	3 Yr Avg
Department Total	205	216	180	152	144	239	189
Roseville Gateway							#DIV/0!
Rocklin Campus	122	126	89	121	101	140	117
Tahoe Truckee	24	21	12		11	10	16
Nevada County Campus	59	23	45		32	25	37
Distance Learning		46	34	31		64	44



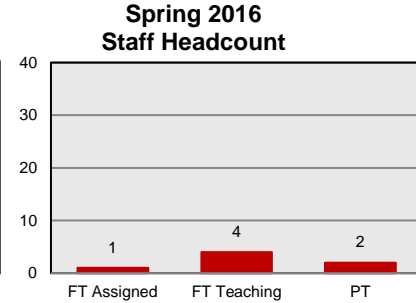
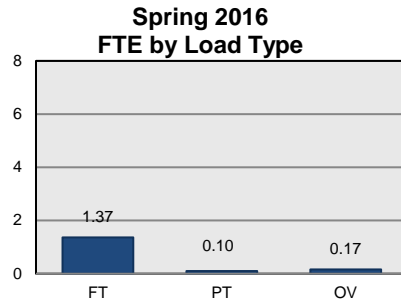
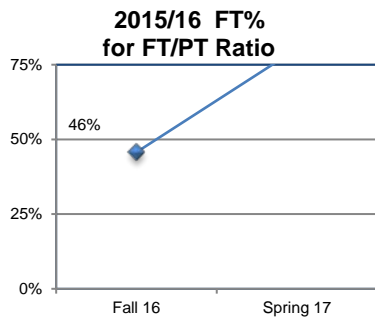
District Information	Fall 14	Spring 15	Fall 15	Spring 16	Fall 16	Spring 17	3 Yr Avg
District Enrollment	54,932	53,058	54,133	52,752	52,884	50,350	53,018
District Retention	85%	85%	85%	85%	86%	86%	85%
District Success	72%	73%	72%	72%	73%	73%	73%
District Efficiency	466	447	459	443	440	441	449
District Fill Rate	94.0%	91.0%	92.1%	89.4%	89.0%	88.0%	90.6%

Environmental Studies and Sustainability

Science and Math

Instructional FTEF by Load Type	Fall 14	Spring 15	Fall 15	Spring 16	Fall 16	Spring 17	3 Yr Avg
FT	0.60	0.37	0.80	0.70	0.27	1.37	0.68
PT	1.04	1.03	0.47	0.22	0.97	0.10	0.64
OV	0.20	0.00	0.20	0.07	0.30	0.17	0.16
Total FTEF	1.84	1.40	1.47	0.99	1.54	1.64	1.48

FT/PT Ratio (FT%)	Fall 14	Spring 15	Fall 15	Spring 16	Fall 16	Spring 17	3 Yr Avg
Dept	98%	48%	100%	78%	46%	80%	75%
Rocklin	97%	33%	100%	78%	49%	90%	75%
NCC	100%	100%	100%		50%	100%	90%
RG							#DIV/0!
TT		0%	0%		35%	0%	9%
DL		100%	100%			75%	92%



Staff Headcount	Fall 14	Spring 15	Fall 15	Spring 16	Fall 16	Spring 17	3 Yr Avg
FT Assigned	1	1	1	1	1	1	1.00
FT Teaching	2	4	2	2	3	4	2.83
PT	5	5	2	1	2	2	2.83

Majors	Fall 14	Spring 15	Fall 15	Spring 16	Fall 16	Spring 17	3 Yr Avg
Environ Studies_Sustain	140	156	143	132	149	138	143.00
Photovoltaic	1						1.00
Photovoltaic Advanced	1						1.00
							#DIV/0!
							#DIV/0!
							#DIV/0!

Awards	2014-15	2015-16	2016-17	3 Yr Avg
AA				#DIV/0!
AS			4	4.00
AA-T				#DIV/0!
AS-T				#DIV/0!
Certificate			2	2.00
Total	0	0	6	2.00

Course Outcomes	# of Active Courses	# Courses Assessed	# Active Learning Outcomes	Outcomes Assessed
	8	4	22	16
Program Outcomes	# of Program Outcomes	Outcomes Assessed		
Curriculum Currency SP 16				

Active Course = Taught during the previous 3 years
 Active Learning Outcomes = Active Course outcomes
 Course Assessed = Course assessed and SAA submitted during the previous 3 years
 Outcomes Assessed = Outcomes assessed during the previous 3 yrs
 Program Outcomes = Active Program Level Outcomes

Environmental Studies and Sustainability

Science and Math

Retention/Success by Ethnicity	Fall 14		Spring 15		Fall 15		Spring 16		Fall 16		Spring 17		3 Yr Avg
	Enr.	%	Enr.	%	Enr.	%	Enr.	%	Enr.	%	Enr.	%	
African American Ret.	4	100%	4	100%	3	100%	3	67%	1	100%	4	50%	84%
African American Succ.		0%		50%		100%		0%		100%		25%	37%
Amer Indian/Alaskan Nat Ret.	1	100%	2	50%	1	100%	1	100%	7	86%	7	100%	89%
Amer Indian/Alaskan Nat Succ.		100%		0%		100%		100%		86%		100%	84%
Asian Ret.	6	100%	4	100%	2	100%	5	80%	5	60%	13	100%	91%
Asian Succ.		100%		100%		50%		60%		60%		92%	83%
Filipino Ret.	2	50%	2	100%	1	100%	2	100%			2	50%	78%
Filipino Succ.		50%		50%		100%		100%				50%	67%
Hispanic/Latino Ret.	30	90%	22	82%	26	100%	22	86%	12	100%	34	94%	92%
Hispanic/Latino Succ.		57%		55%		73%		55%				82%	60%
Pacific Islander Ret.			1	100%	2	100%	2	100%			1	100%	100%
Pacific Islander Succ.				100%		100%		100%				100%	100%
Other/Multi-Ethnic Ret.	2	50%	2	0%	1	100%					1	100%	50%
Other/Multi-Ethnic Succ.		50%		0%		100%						100%	50%
Unknown/Declined Ret.	2	100%	2	100%	1	100%			1	100%	3	67%	89%
Unknown/Declined Succ.		100%		50%		100%						33%	56%
White Ret.	158	91%	177	86%	143	90%	117	96%	118	95%	174	94%	92%
White Succ.		72%		74%		78%		84%		86%		83%	79%
Disparate Threshold (Succ.)		57%		59%		63%		67%		68%		66%	63%

Retention/Success by Equity Pop.	Fall 14		Spring 15		Fall 15		Spring 16		Fall 16		Spring 17		3 Yr Avg
	Enr.	%	Enr.	%	Enr.	%	Enr.	%	Enr.	%	Enr.	%	
Students with Disabilities Ret.	9	56%	11	82%	13	92%	10	100%	14	93%	20	90%	87%
Students with Disabilities Succ.		22%		45%		85%		100%		86%		85%	74%
Foster Youth Ret.	2	100%	3	100%	1	100%							100%
Foster Youth Succ.		0%		0%		100%							17%
Low Income Ret.*	122	90%	129	86%	102	95%	77	91%	54	94%	91	87%	90%
Low Income Succ.*		66%		71%		81%		77%		83%		77%	75%
Veteran Ret.	3	100%	5	80%	10	100%	6	100%	8	88%	8	88%	93%
Veteran Succ.		67%		80%		90%		67%		75%		88%	80%
Female Ret.	104	92%	104	87%	91	91%	66	95%	69	93%	127	95%	92%
Female Succ.		72%		74%		84%		79%		86%		84%	79%
Male Ret.	100	90%	110	84%	84	92%	78	91%	70	96%	100	91%	90%
Male Succ.		66%		66%		71%		77%		86%		78%	73%
Other/Non-Disclosed Gender Ret.	1	0%	2	100%	5	100%	8	100%	5	80%	12	92%	91%
Other/Non-Disclosed Gender Succ.		0%		100%		100%		75%		80%		92%	85%

