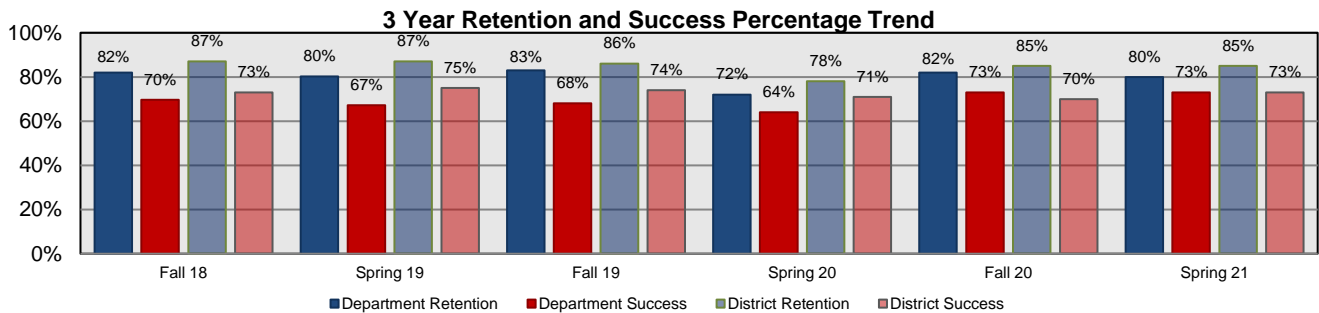
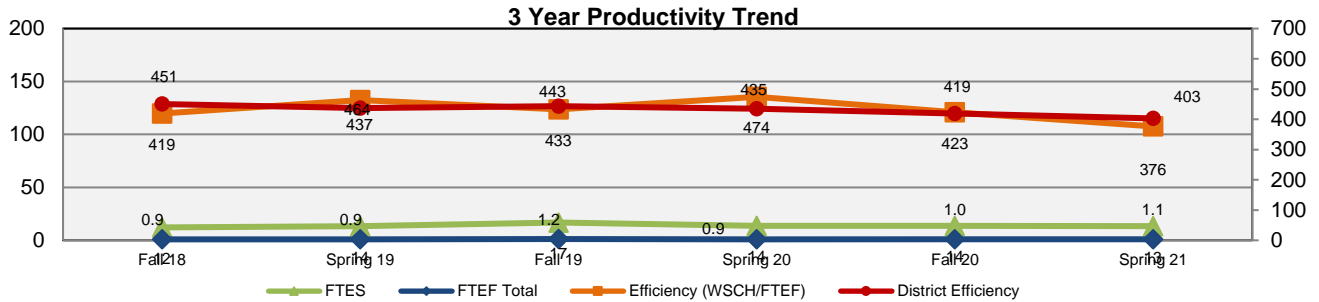
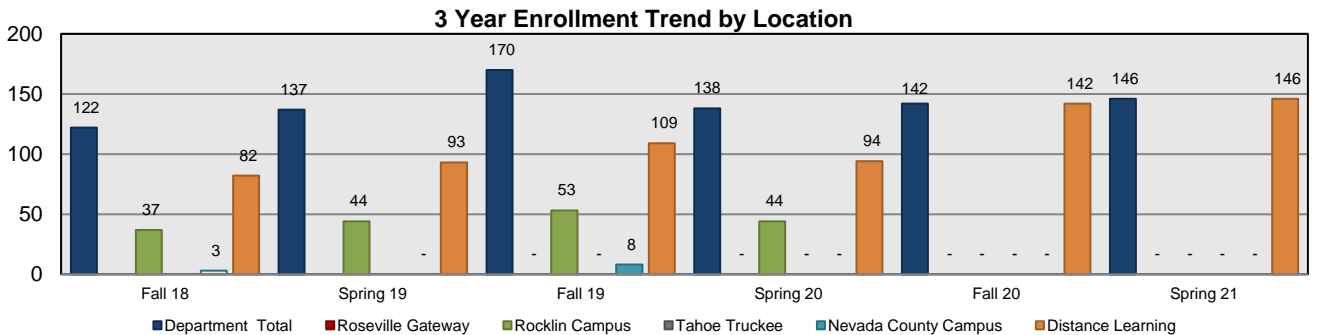


WMST	Fall 18	Spring 19	Fall 19	Spring 20	Fall 20	Spring 21	3 Yr Avg
FTES	12	14	17	14	14	13	14
FTEF Total	0.9	0.9	1.2	0.9	1.0	1.1	1.0
Efficiency (WSCH/FTEF)	419	464	433	474	423	376	431.6
Fill Rate	74.0%	82.0%	73.0%	74.0%	77.0%	71.0%	75.2%
AveSize	20.3	22.8	21.3	23.0	20.3	18.3	21.0
# of Sections	6	6	8	6	7	8	7
Department Retention	82%	80%	83%	72%	82%	80%	80%
Department Success	70%	67%	68%	64%	73%	73%	69%
Online Retention	79%	77%	80%	73%	82%	80%	79%
Online Success	68%	68%	68%	71%	73%	73%	70%

(28, 95,450 and 800 Courses)



Enrollment by Location	Fall 18	Spring 19	Fall 19	Spring 20	Fall 20	Spring 21	3 Yr Avg
Department Total	122	137	170	138	142	146	143
Roseville Gateway			.	.	.	.	#DIV/0!
Rocklin Campus	37	44	53	44	.	.	45
Tahoe Truckee			.	.	.	.	#DIV/0!
Nevada County Campus	3	-	8	.	.	.	4
Distance Learning	82	93	109	94	142	146	111



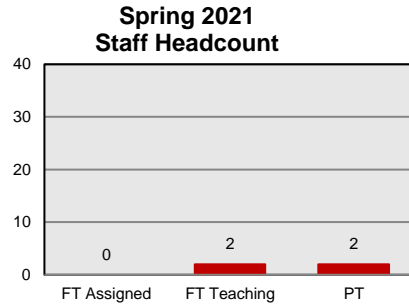
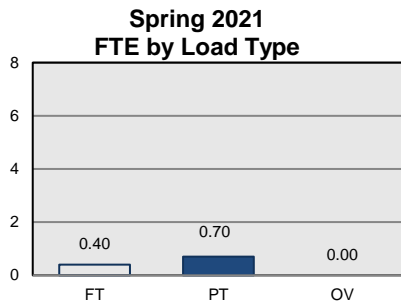
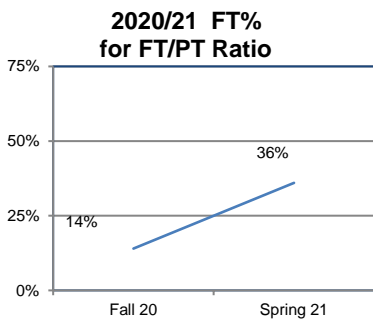
District Information	Fall 18	Spring 19	Fall 19	Spring 20	Fall 20	Spring 21	3 Yr Avg
District Enrollment	53,068	50,881	54,041	50,765	51,336	46,083	51,029
District Retention	87%	87%	86%	78%	85%	85%	85%
District Success	73%	75%	74%	71%	70%	73%	73%
District Efficiency	451	437	443	435	419	403	431
District Fill Rate	89.0%	87.0%	82.0%	77.0%	81.0%	77.0%	82.2%

**Women and Gender Studies**

**Liberal Arts**

Instructional FTEF by Load Type	Fall 18	Spring 19	Fall 19	Spring 20	Fall 20	Spring 21	3 Yr Avg
FT	0.20	0.30	0.40	0.20	0.10	0.40	0.27
PT	0.60	0.50	0.60	0.50	0.60	0.70	0.58
OV	0.10	0.10	0.20	0.20	0.30	0.00	0.15
<b>Total FTEF</b>	<b>0.90</b>	<b>0.90</b>	<b>1.20</b>	<b>0.90</b>	<b>1.00</b>	<b>1.10</b>	<b>1.00</b>

FT/PT Ratio (FT%)	Fall 18	Spring 19	Fall 19	Spring 20	Fall 20	Spring 21	3 Yr Avg
Dept	25%	38%	40%	29%	14%	36%	30%
Rocklin	100%	100%	67%	100%	.	.	92%
NCC	0%	.	.	.	.	.	0%
RC	.	.	.	.	.	.	#DIV/0!
TT	.	.	.	.	.	.	#DIV/0!
DL	0%	0%	29%	0%	14%	36%	13%



Staff Headcount	Fall 18	Spring 19	Fall 19	Spring 20	Fall 20	Spring 21	3 Yr Avg
FT Assigned	0	0	0	0	0	0	0.00
FT Teaching	2	2	3	2	2	2	2.17
PT	2	2	3	2	3	2	2.33

Majors	Fall 18	Spring 19	Fall 19	Spring 20	Fall 20	Spring 21	3 Yr Avg
Women's Studies	11	13	15	12	13	12	12.67
							#DIV/0!
							#DIV/0!
							#DIV/0!
							#DIV/0!

Awards	2018-19	2019-20	2020-21	3 Yr Avg
AA	14	12	16	14.00
AS				#DIV/0!
AA-T				#DIV/0!
AS-T				#DIV/0!
Certificate				#DIV/0!
<b>Total</b>	<b>14</b>	<b>12</b>	<b>16</b>	<b>14.00</b>

Course Outcomes	# of Active Courses	# Courses Assessed	# Active Learning Outcomes	Outcomes Assessed
	4	1	12	3
Program Outcomes	# of Program Outcomes	Outcomes Assessed		
<b>Curriculum Currency SP 16</b>				

Active Course = Taught during the previous 3 years      Outcomes Assessed = Outcomes assessed during the previous 3 yrs  
 Active Learning Outcomes = Active Course outcomes      Program Outcomes = Active Program Level Outcomes  
 Course Assessed = Course assessed and SAA submitted during the previous 3 years

Women and Gender Studies

Liberal Arts

Retention/Success by Ethnicity	Fall 18		Spring 19		Fall 19		Spring 20		Fall 20		Spring 21		3 Yr Avg
	Enr.	%	Enr.	%	Enr.	%	Enr.	%	Enr.	%	Enr.	%	
African American Ret.		65%		64%		56%		38%		60%		67%	59%
African American Succ.	17	47%	11	45%	9	56%	8	38%	5	40%	6	67%	48%
Amer Indian/Alaskan Nat Ret.		83%		86%									85%
Amer Indian/Alaskan Nat Succ.	6	83%	7	71%									77%
Asian Ret.	1	0%	5	20%	8	63%	13	77%	8	88%	6	100%	71%
Asian Succ.		0%		20%		38%		54%		88%		100%	59%
Filipino Ret.	2	100%	1	100%	5	100%	6	83%	1	100%	1	100%	94%
Filipino Succ.		100%		0%		80%		83%		100%		100%	81%
Hispanic/Latino Ret.	22	82%	31	71%	31	87%	26	65%	37	81%	37	65%	75%
Hispanic/Latino Succ.		73%		58%		68%		65%		59%		51%	61%
Pacific Islander Ret.											1	0%	0%
Pacific Islander Succ.												0%	0%
Other/Multi-Ethnic Ret.	3	100%	1	100%	14	86%	16	63%	11	73%	9	78%	76%
Other/Multi-Ethnic Succ.		100%		100%		57%		38%		73%		67%	59%
Unknown/Declined Ret.			1	100%	3	100%	3	67%	8	100%	2	100%	94%
Unknown/Declined Succ.				100%		67%		67%		100%		100%	88%
White Ret.	71	86%	80	89%	100	84%	66	79%	72	82%	84	87%	85%
White Succ.		72%		76%		73%		74%		76%		81%	75%
Disparate Threshold (Succ.)		57%		61%		58%		59%		61%		65%	60%

Retention/Success by Equity Pop.	Fall 18		Spring 19		Fall 19		Spring 20		Fall 20		Spring 21		3 Yr Avg
	Enr.	%	Enr.	%	Enr.	%	Enr.	%	Enr.	%	Enr.	%	
Students with Disabilities Ret.	9	89%	12	67%	16	75%	12	67%	9	89%	11	55%	73%
Students with Disabilities Succ.		56%		58%		63%		67%		78%		55%	63%
Foster Youth Ret.	2	50%			1	100%	4	100%			2	100%	#####
Foster Youth Succ.		50%				0%		75%				100%	#####
Low Income Ret.*	93	78%	91	82%	98	82%	74	72%	68	76%	60	78%	79%
Low Income Succ.*		65%		69%		68%		65%		65%		67%	67%
Veteran Ret.	2	100%	3	100%	1	100%	2	50%			2	100%	#####
Veteran Succ.		100%		33%		100%		50%				100%	#####
Female Ret.	105	84%	120	79%	147	82%	115	74%	127	80%	131	79%	80%
Female Succ.		71%		67%		67%		70%		70%		70%	69%
Male Ret.	15	73%	14	93%	20	85%	20	65%	12	100%	14	93%	83%
Male Succ.		60%		79%		75%		55%		92%		93%	74%
Other/Non-Disclosed Gender Ret.	2	50%	3	67%	3	100%	3	33%	3	100%	1	100%	73%
Other/Non-Disclosed Gender Succ.		50%		33%		100%		33%		100%		100%	67%

