

## Using Figures in APA Format, 7<sup>th</sup> Edition

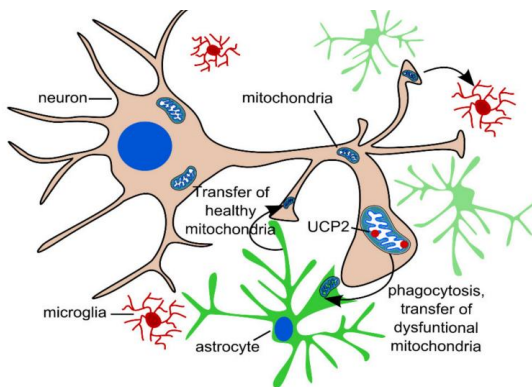
1. Place figures (photographs, charts, diagrams, and so on) below the text that addresses them. Maintain double spacing.
2. Give the figure a number and include the number in a parenthetical reference, for example (see Figure 1), in the text of your paper. Also include **Figure 1** (in bold), above the figure.
3. Include a figure title in italics one double-spaced line below the figure number.
4. Include a general note that explains the figure. Beneath the figure, write *Note* (in italics) followed by a period. Write enough so that someone looking at visuals but not reading your paper can understand the figure.
5. Follow the note with information for the figure in APA format. Start with the word *From* or *Adapted from* and then the title of the source. Next put the word *by* followed by the author's name and the date. Use commas instead of periods between the elements of the reference. Write to the margins on both sides of the paper.
6. Alternatively, place figures at the end of your paper. If in Appendix A, label as *Figure A1*, etc.

4

Here the paragraph from page 3 continues to page 4, and this is the part of the paper where a figure is needed (see Figure 1).

### **Figure 1**

#### *Transcellular Mitophagy*



*Note.* During transcellular mitophagy, damaged mitochondria are expelled by glial cells. From “Impaired Mitophagy in Neurons and Glial Cells During Aging and Age-Related Disorders,” by V. Sukhorukov, D. Voronko, T. Baranich, N. Mudzhiri, A. Magnaeva, and S. Illarioshkin, 2021, *International Journal of Molecular Science*, 22(19), p. 10251 (<https://doi.org/10.3390/ijms221910251>).

Here the paper continues its content placing the figure in context. . .